

# Model-Building Competition Results

By "Spanner"

## Comments on Prize-winning Models

### Autumn "General" Contest (Home Section)

The list of prizewinners in the Home Section of the Autumn "General" Model-Building Competition, details of which were published in the October 1936 issue of the "M.M.," is as follows:

1st Prize, Meccano or Hornby products value £3/3/-: E. Clements Farnborough, Kent. 2nd, products value £2/2/-: L. McKenzie, Prestwick, Ayrshire. 3rd, products value £1/1/-: A. Robertson-Aikman, Worthing.

Products value 5/-: C. Gregory, Nottingham; N. Sharples, Edinburgh; P. Frost, Nottingham; H. Williams, Birmingham; P. Bradley, Stanmore, Middx.; G. Harrison, Betchworth, Surrey; A. Mills, Bilston By Roslin, Midlothian; J. Kennett, Richmond; S. Robinson, West Hartlepool; W. Phillips, Fulstow, Lincs.; A. Watkins, Brecon; H. Waters, Liverpool.

The competition was open for models of any kind built from Meccano parts. There were no restrictions as to the size of Outfit

to be used, and as a result competitors had ample scope to reveal their ingenuity and skill. A large number of interesting models was submitted and I am describing a few of the most outstanding and original for the benefit of readers on the look-out for interesting subjects for future attention.

A model house submitted by E. D. Clements was awarded First Prize. The house is constructed mainly of Strips and Flexible Plates attached to a framework of Angle Girders, and is remarkable for the amount of detail that it contains. The down-comer drainage pipes are represented by Axle Rods, and are held in place by Handrail Supports. Worm Gears are used to represent chimney pots, and they look most realistic on the built-up stacks. The front of the house is decorated in a neat design, wheels of different sizes and types being used with good effect for this purpose. The front door, which is constructed of 2½" Strips and Simple Bell Cranks, is fitted with a pane of leaded glass, and is mounted on hinges so that it can be opened and closed. A sheet of cardboard serves as the roof, and is held in place by Strips and Angle Girders.

L. McKenzie sent the neat model motor racing car illustrated on this page. It was awarded Second Prize, the judges being very favorably impressed with its sturdy construction, good proportions and realistic appearance.

A. Robertson-Aikman submitted a model of a six-wheeled lorry, which is equipped with a three-speed and reverse gear-box, differential and Ackerman type steering. Each of the two rear axles

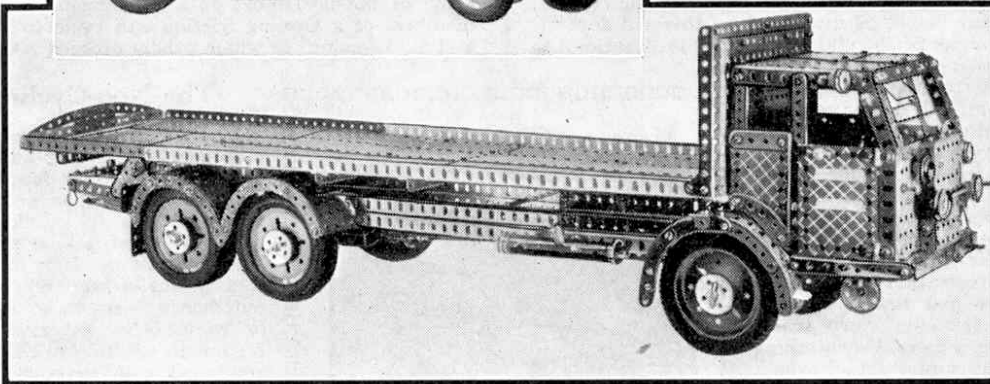
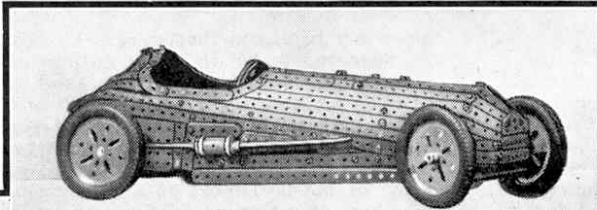
carries double wheels, and a spare wheel is accommodated in a special container built into the chassis. Sleeve Pieces and Flanged Wheels make a realistic exhaust pipe, and this is attached to the chassis by Screwed Rods. A pair of headlights made with the Meccano Lighting Set, add a finishing touch to the model. The judges were pleased with the constructional details of this model, and with more originality in design it would have been deserving of a larger prize.

A traction engine of the type used by travelling amusement caterers was the subject of the entry sent in by P. W. Bradley. The model is driven by an

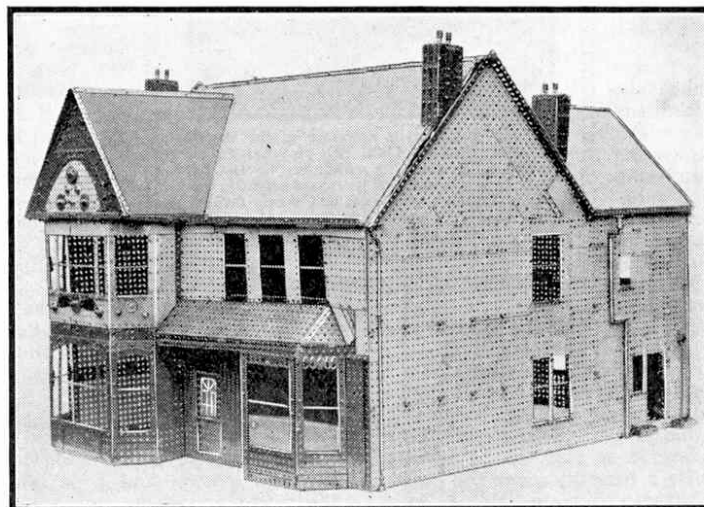
Electric Motor, and is fitted with a gear-box so arranged that the power can be used to drive either the traction engine or a dummy dynamo that is mounted at the forward end of the cab. Two terminals placed near the dynamo are wired in parallel with the Motor, so that model roundabouts may be driven. This is an interesting touch of realism and is

very effective. The cab carries all the fittings usually found in a traction engine, and the firebox is provided with a hinged door.

H. Williams submitted a layout for a two-way Dinky Toys car drive. In this Dinky Toys motor vehicles are pulled along by means of pieces of wire that protrude through slots in a sheet of plywood fitted with buildings and roadways to represent a village.



Two fine models that won prizes in the Autumn "General" Contest. The racing car is the work of L. McKenzie, Prestwick, Ayrshire, and the six-wheeled lorry was built by A. Robertson-Aikman, Worthing.



A close examination is necessary to reveal that this well-proportioned house is not an actual modern villa, but only a Meccano miniature. It was built by E. D. Clements, Farnborough, and won First Prize in the "General" Model-Building Competition.

### Christmas "Simplicity" Model-Building Contest (Home Section)

The following competitors were successful in winning prizes in the "Simplicity" Competition announced in the "M.M." for December 1936.

1st Prize, Meccano or Hornby products value £2/2/-: D. Linfoot, York. 2nd, products value £1/1/-: A. Miller, Liverpool 14. 3rd, products value 10/6: E. Winters, Brighton.

Products value 5/-: A. Tarry, Harpenden; H. Chatterton, Croydon; J. Speed, Gresty, Nr. Crewe; E. Field, Coventry; J. Jones, Manchester 14; J. Marshall, Nottingham.

### "Nuts and Bolts" Estimating Contest (Home and Overseas)

In this Contest competitors were invited to estimate the number of nuts and bolts used in building the model B.S.A. three-wheel car illustrated on page 596 of the "M.M." for

October 1936. The competitors named in the following list submitted estimates most nearly correct and accordingly they have been awarded prizes as indicated, in order of merit.

1st Prize, Meccano or Hornby products value £2/2/-: R. Waters, Bexley Heath, Kent. 2nd, products value £1/1/-: Loh Meng Chew, Singapore, Straits Settlements. 3rd (tie), products value 10/6 divided equally between R. Emdon, Plymouth and F. Smith, Leamington Spa.