



MECCANO-TRIANG LTD., the makers of Dinky Toys, have entered the construction kit field with a unique product which could well shake the established foundations of the market, at present dominated by plastic models.

Meccano, who are continually increasing their extensive Dinky range, have an undisputed world-wide reputation for quality and accuracy. Introducing a completely new product can be a make-or-break business, especially in today's competitive toy market.

Fully aware of these dangers, Meccano-Triang have emerged with a new concept of the Dinky Toy: Dinky Toys which you can build yourself, without relinquishing the strength or the play value of the real thing.

The obvious difference between these "Do-it-Yourself Dinky Toys" and their plastic counterparts is that the components are all metal, in a knock-down form, produced to the usual high standards. The only non-metal parts, in fact, are the moulded plastic interiors, tyres and jewelled headlamp lenses contained in each kit.

Identified under the name of "Dinky Action Kits", they have distinct advantages over their plastic relatives, advantages which could well capture the loyalty, not only of the Kit-man, but also, because of their inherent simplicity, of the young collector who finds plastic kits beyond his capabilities.

The principal point, I feel, is that all the models can be put together, painted and then taken apart as often as you like, without the need of adhesive. Also,

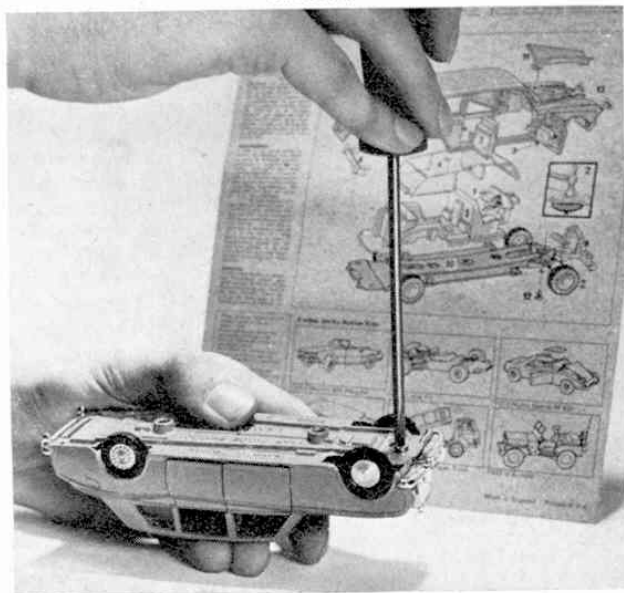
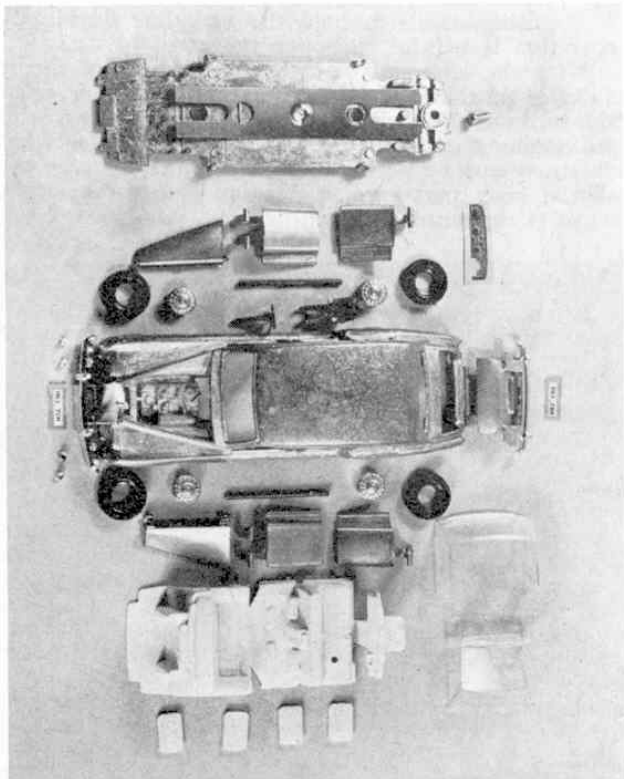
BUILD YOURSELF A DINKY TOY

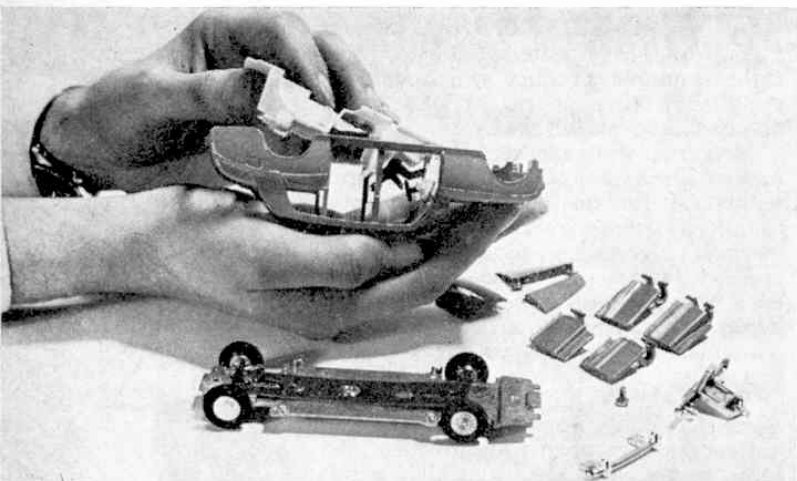
A NEW PRODUCT FROM MECCANO

By FRANK LOMAX

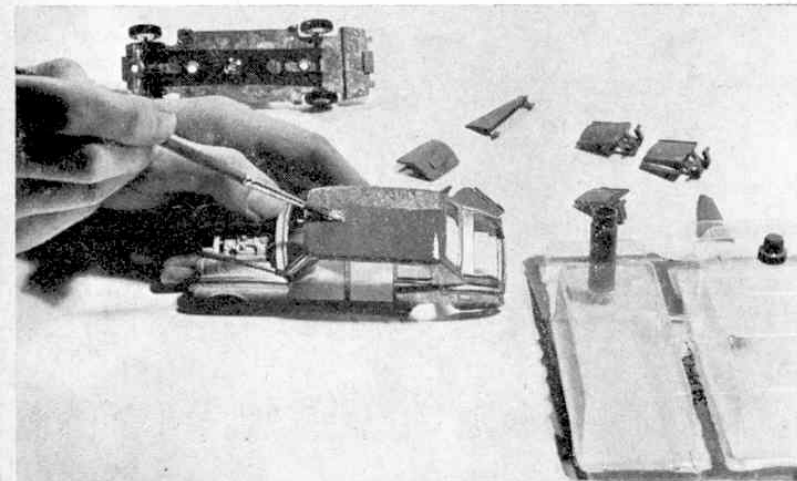
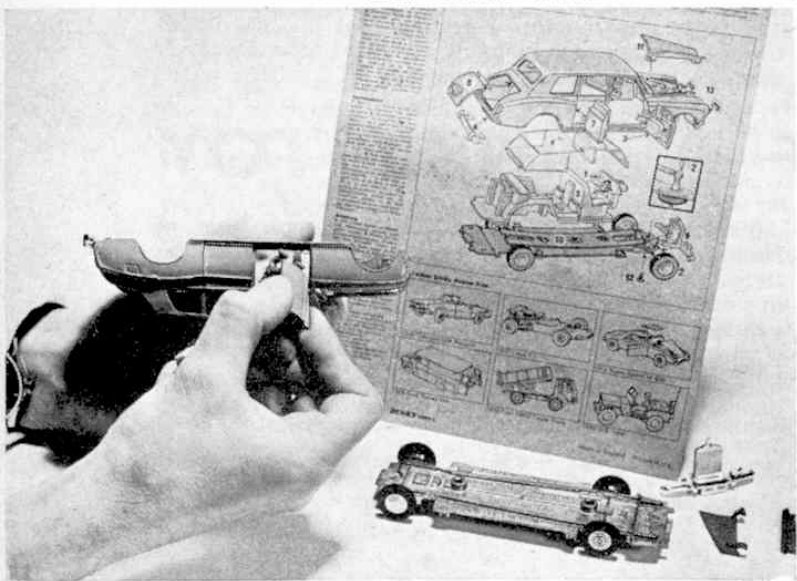
unlike the majority of plastic kits, a sample phial of Humbrol enamel, sufficient to paint the model, is supplied with each kit, the parts being pre-bonderised in preparation for painting.

Top: The first "Do-it-Yourself" Dinky Toy from the range of Dinky Action Kits, number 1001 Rolls-Royce Phantom V Limousine. Left: This picture of the parts included in the Rolls-Royce Action Kit clearly shows how many individual components are contained in a typical Dinky Toy. Below: With all the doors and internal components in position, the base-plate assembly is added and screwed into place using the special self-tapping screw provided. Earlier steps are shown overleaf.





Above: When assembling the model it is best to hold the body casting upside-down to prevent the seat moulding from becoming dislodged. Below: Keeping a watchful eye on the easy-to-follow assembly instructions printed on the back of the pack, the doors are fitted to our test model, still keeping the body casting in an inverted position. Bottom: Packed with each of the new Dinky Action Kits is a sample phial of Humbrol enamel, sufficient to paint the model. The components should be painted while unassembled. A special stand to hold the phial of enamel during painting is included in each Action Kit's "blister" Pack.



There is no need, of course, to use only the sample colour provided. Humbrol market a wide range of colours and it is possible to create your own individual version of a model at very little extra cost, an attribute which should appeal to artistic readers. The picture on page 217, showing a variety of hand-painted models, will give you some idea of just what can be done.

Selected Range

Initially, the range will include seven models, which are duplicates in every way of original Dinky Toys, with opening doors, boots, bonnets, etc. The first three kits, the Rolls-Royce Phantom V Limousine, the Lotus F1 Racing Car and the Ford Transit Van, are already in the shops. Four more kits are on the way—a U.S. Jeep, Matra M530 Sports Car, Peugeot 504 Cabriolet and a Ford T.K. Tipper Truck—and additional items are planned for the future.

Simple Instructions

Naturally, full assembly instructions are included with each Kit and this, again, is where the Dinky Kits differ from many of their plastic counterparts. How often have comparatively complicated instructions made plastic kit assembly an arduous task? Pretty frequently, in my experience, but this can certainly not be said of the new Dinky Kits. Indeed, the assembly instructions and "exploded" diagrams on the back of the transparent "blister" packs are simple enough for even a small child to follow without difficulty.

Assembly Hints

From my tests, I found that it was advisable, when assembling the base unit of a model, to first fix one of the wheels on each axle, using a lightweight hammer, before mounting the axle in the baseplate. Once this has been done, the axle should be inserted in its channel and the second wheel secured with the base unit standing on its edge to achieve a satisfactory fit. A "second man" to hold the baseplate during this operation is helpful, although not essential.

With the base unit completed, assembly of the remainder of the model is relatively easy. It is advisable to hold the main body casting upside-down while positioning the doors, boot, bonnet, etc., after which the base can be secured in place, making sure that all the body parts are in position before the locking screw is tightened.

Painting

Before painting, the kit should be assembled to check that all the parts fit together neatly, the removal of any unwanted metal, or "flash", on the parts being attended to at this stage, as necessary. Once everything is in order, the model should be taken apart and the individual components painted, the phial of enamel being stood in the special holder provided for it in the plastic "blister" in which the parts are packed. I found it useful to make arrangements for holding the painted components and, as wet paint collects dust, they should be covered during drying. I painted one side of each part first, allowing it to dry, before starting on the other side. For an immaculate finish, the paint should be used liberally, flowing it on with the brush, not "stroking" excessively backwards and forwards, which leaves brush marks. When everything is dry, the model can then be finally assembled to result in a real honest-to-goodness Dinky Toy!

More

DINKY TOY NEWS

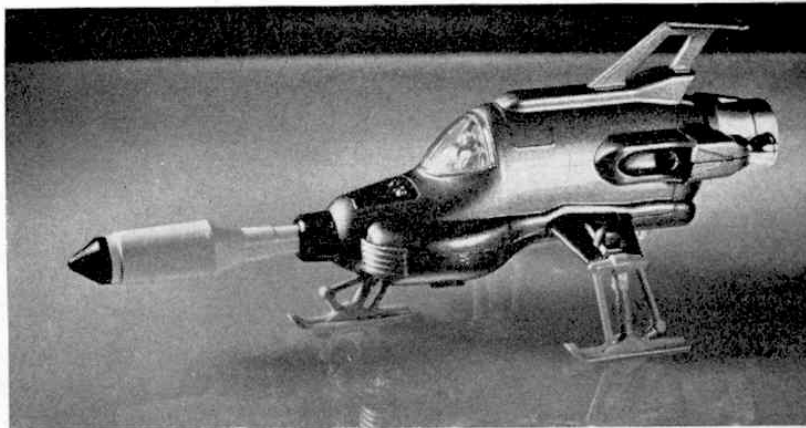
by Frank Lomax

THE SPACE-AGE CULT, born in the science-fiction comics and further popularised by the cinema and especially television, has had a profound influence on the development of children's toys all over the world during the last decade. The trend is still continuing and, with three successful manned moon landings, it is unlikely to lose any of its momentum.

Television has, undoubtedly, brought the wonders of the cosmos into the home and the increasing variety of science-fiction and space-travel programmes which appear on our screens proves the existence of an established interest in the subject. It is from television that Dinky Toys have received inspiration for their very latest space vehicle, the fabulous U.F.O. Interceptor—a fighting missile ship, taken straight from the Independent Television programme, "U.F.O."

Perhaps one of the most interesting and dynamic models ever to appear in the Dinky Toy range, the U.F.O. has an "explosive" feature which will provide hours of fun: a large rocket, fired by a spring-loaded plunger, can be launched from its nose, accompanied by a spurt of flame and an impressive "bang", the latter effects supplied by a cap, mounted on the plunger. Loading is a simple process. A lever, situated underneath the main body, is pulled back, a cap having been placed on the plunger head. The plastic missile, soft-tipped for safety, is inserted into the nose and fired by pressing a button on the side of the main body. It is important to stress, however, that the explosion of the cap does not actually propel the rocket, but is designed to give highly realistic sound and visual effects.

The Interceptor, Sales No. 351, has a compact, low body, streamlined for high velocity, but with a rough-and-ready demeanour; enough to make any three-eyed alien shake in its astral boots! It is supported by three rigid legs, mounted on skis, two placed towards the stern and attached to protruding fins, and the other just behind the nose. Its futuristic appearance is further



enhanced by a small delta wing raised above the body on a strong mounting.

The pilot, seated at his highly sophisticated control panel in his space suit, plots his course in his moulded cockpit, protected from the Gamma and other such dangerous rays by a blue tinted canopy, on each side of which the engine inlet grilles are mounted. From the stern, the Interceptor presents a picture of power, resolute and enduring, impressions created by the huge main motor exhaust outlet which is flanked on either side by two smaller manoeuvring jets. The overall effect is one of over-riding strength, spelling destruction to any celestial invader!

Finished in metallic lime green with bright-plated fittings and orange "legs", this fun-packed addition to the Dinky Toy range should receive an enthusiastic response from space-age model collectors.

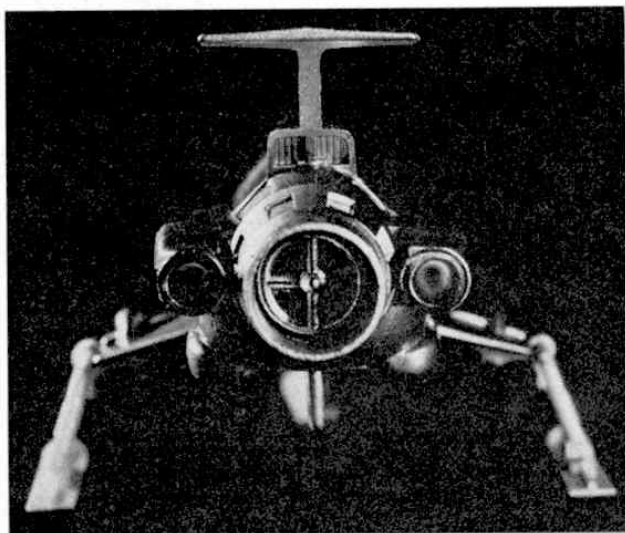
German Sports Car

Coming down to earth, so to speak, recent motoring statistics indicate that foreign cars have become increasingly popular in this country, already occupying a substantial section of the British market. Indeed, with our present desire to become a more intimate member of the European community, the British car manufacturer could find it difficult to persuade the motorist to "Buy British", judging by the influx of, in some cases, cheaper and more reliable cars from the Continent.

Of course, this could apply to many of our industries, but a fashion for foreign cars particularly, appears to have emerged (amongst those who can afford it!) over the years.

With the aim of keeping the collector in touch with the latest from the Continent, coupled with an eye to overseas exports, Dinky Toys have now extended their range of foreign cars with a brand new reproduction of the Volkswagen-Porsche 914 Sports Car.

Produced by Volkswagen-Porsche of Stuttgart, West Germany, the "VolksPorsche", as it is commonly known, is a 2-seater sports car which is available either as a coupé, or with removable hardtop. It incorporates several unusual features, not least of which is a centrally-positioned engine mounted immediately behind the seats, which leaves room for two large luggage compartments and greatly increases road-holding by offering evenly distributed weight characteristics. The engine itself can be one of two alternative power
(please turn to page 254)



Top: Straight from the Independent Television science-fiction programme, "U.F.O.", the new Dinky Toy U.F.O. Interceptor, Sales No. 351. Left: Disappearing into space, the U.F.O. presents a picture of power with its huge main engine exhaust, flanked by two smaller manoeuvring jets.

Black Prince, a one-time showman's engine, as it arrived at Bressingham for restoration.

Francis. Built on an articulated chassis, it was designed for heavy loads up steep gradients and round difficult curves. It was named after the mine owner William Francis Dugdale.

When *Bronwlyd* first reached Bressingham from Penrhyn, it was a scrap chassis with no boiler. To put this relic into operational order a boiler from another scrap locomotive was installed. A Hudswell Clarke loco built in 1930, the Welsh-named engine was stripped and rebuilt with this second-hand boiler.

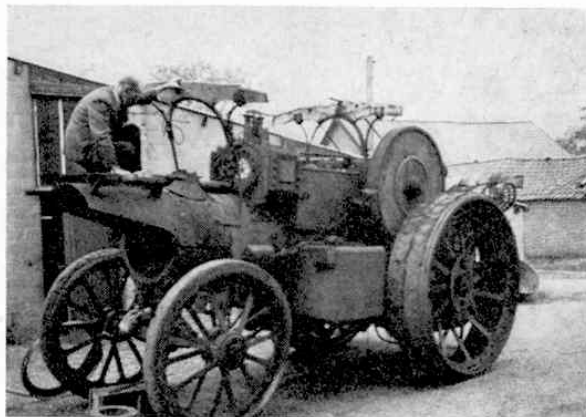
The Hunslet *George Sholto*, built more than sixty years ago, was the first locomotive to be used for regular passenger services on the nursery railway at Bressingham.

In May 1969 a new railway route was opened on the estate. Known as the Woodland Line, it gives visitors an opportunity to travel through a somewhat inaccessible area. The first steam-hauled trip along this mile-long line was made on a special "open" day by 500 passengers brought from London to Diss by the *Flying Scotsman*.

Plans for the near future include laying a new track half-a-mile long and with a 10½ in. gauge. It will give visitors an opportunity to make a new scenic ride round the lake.

Probably the most unexpected feature of this pleasant haven for steam locomotives is that diesel transport has intruded there! A diesel shunter has been introduced, but it is used solely for the nursery business, track repairs, and suchlike jobs.

Steam railway enthusiasts need not fear that the Bressingham collection of steam locomotives will be



diluted with more diesels.

A touch of gaiety is added to the scene by Mrs. Bloom's steam roundabout with an organ. This fair-ground souvenir is 90 years old, and after many years of travelling and giving joy to children and teenagers up and down the country, it has found a permanent site at Bressingham.

OPENING TIMES

First Sunday in May to First Sunday in October, inclusive: 1.30 p.m. to 6.30 p.m.

Bank Holidays in that period.

Third Thursday in May to third Thursday in September: 1.30 p.m. to 5.30 p.m. (Restricted steam activity on Thursdays).

Not open at other times except first Sunday afternoons in each month, November to April inclusive.

DINKY TOY NEWS (Continued from page 227)

plants—a 4-cylinder, 1.7 litre capacity unit developing 80 Horse Power, or a 6-cylinder 2 litre capacity unit which develops 110 Horse Power. The former gives the car a top speed approaching 110 m.p.h., while the 6-cylinder unit results in a maximum speed of almost 125 m.p.h.—figures which undoubtedly prove the "Sports Car" designation in the car's title, whichever engine is fitted.

The Dinky VolksPorsche, Sales No. 208, does not of course offer these speeds, but it certainly qualifies as "fast", thanks to the low-friction Speedwheels which are fitted. It reproduces all the "sporty" lines of the original and has its own model features, including opening doors and an opening bonnet, or, in this case, front luggage compartment lid. So snugly fitting is this lid, in fact, that a special "bonnet lifter" has been incorporated in the shape of a small button projecting through the baseplate. When pressed, this button raises the bonnet slightly to bring the edge free so that a finger can then be used to open the bonnet fully.

All the standard Dinky Toy features are present including windscreen, moulded seats, steering wheel and interior door panels, and German-style number plates. The final touch is supplied by an immaculate colour-scheme of yellow body, contrasting well with bright-plated bumper inserts, black baseplate and black interior fittings. The overall effect is striking, making the model a "must for serious collector and youngster alike".

The new VW-Porsche 914 Sports Car from Dinky, based on a fast 2-seater manufactured by Volkswagen-Porsche of Stuttgart, Germany. On the real car, the open cockpit would be enclosed by a removable hardtop which could be stowed in the boot during open motoring.

