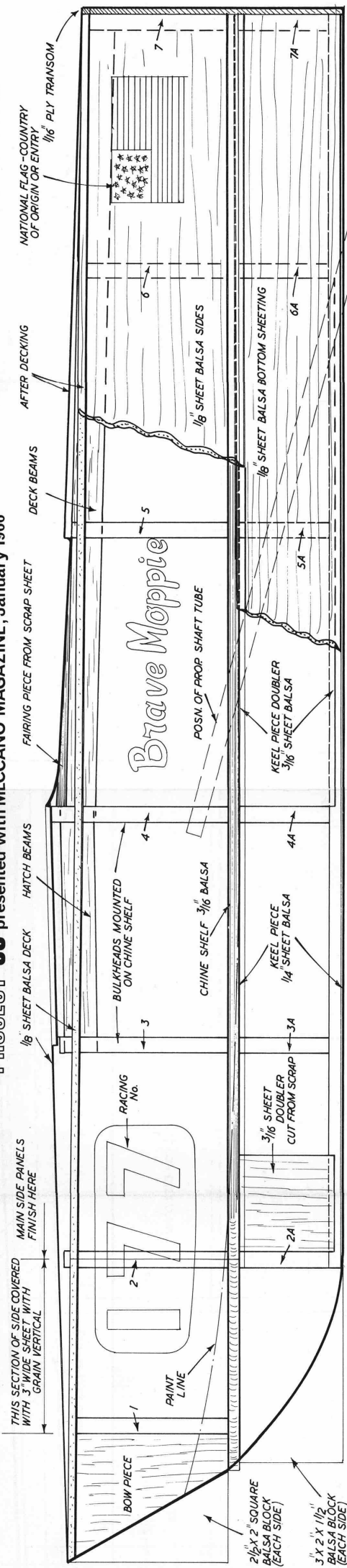
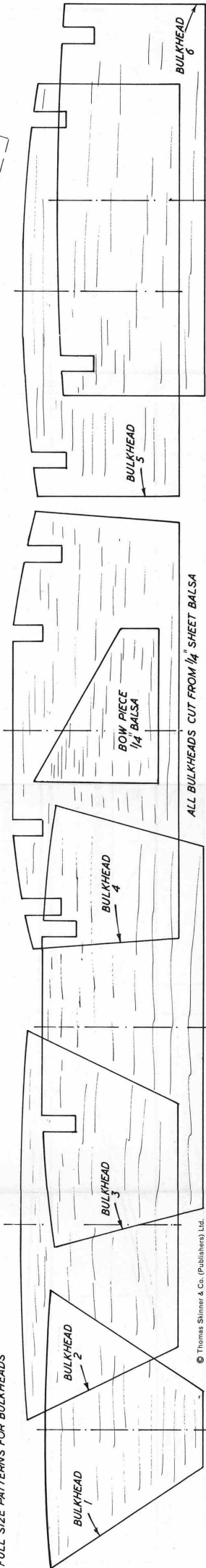
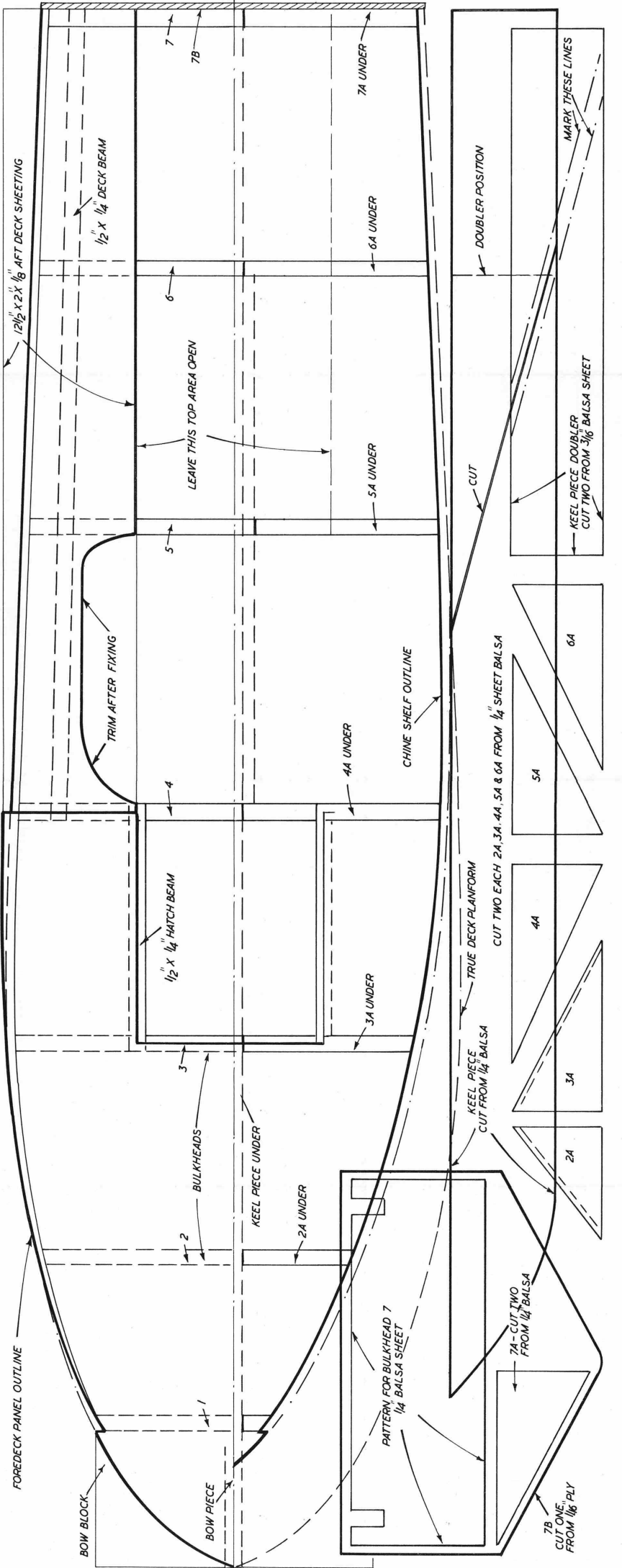


PROJECT '66 presented with MECCANO MAGAZINE, January 1966



FULL SIZE PATTERNS FOR BULKHEADS





FOREDECK PANEL OUTLINE

BOW BLOCK

BOW PIECE

PATTERN FOR BULKHEAD 7
1/4 BALSASHEET

1/2 X 1/4 HATCH BEAM

TRIM AFTER FIXING

1/2 X 1/4 DECK BEAM

LEAVE THIS TOP AREA OPEN

CHINE SHELF OUTLINE

TRUE DECK PLATFORM

KEEL PIECE
CUT FROM 1/4 BALSASHEET

7A-CUT TWO
FROM 1/4 BALSASHEET

7B
CUT ONE
FROM 1/16 PLY

CUT TWO EACH 2A, 3A, 4A, 5A & 6A FROM 1/4 SHEET BALSASHEET

CUT

DOUBLER POSITION

KEEL PIECE DOUBLER
CUT TWO FROM 3/16 BALSASHEET

MARK THESE LINES

12 1/2 X 2 X 1/8 AFT DECK SHEETING

7

7B

6

5

4

3

2

1

6A UNDER

5A UNDER

4A UNDER

3A UNDER

2A UNDER

5A

6A

4A

3A

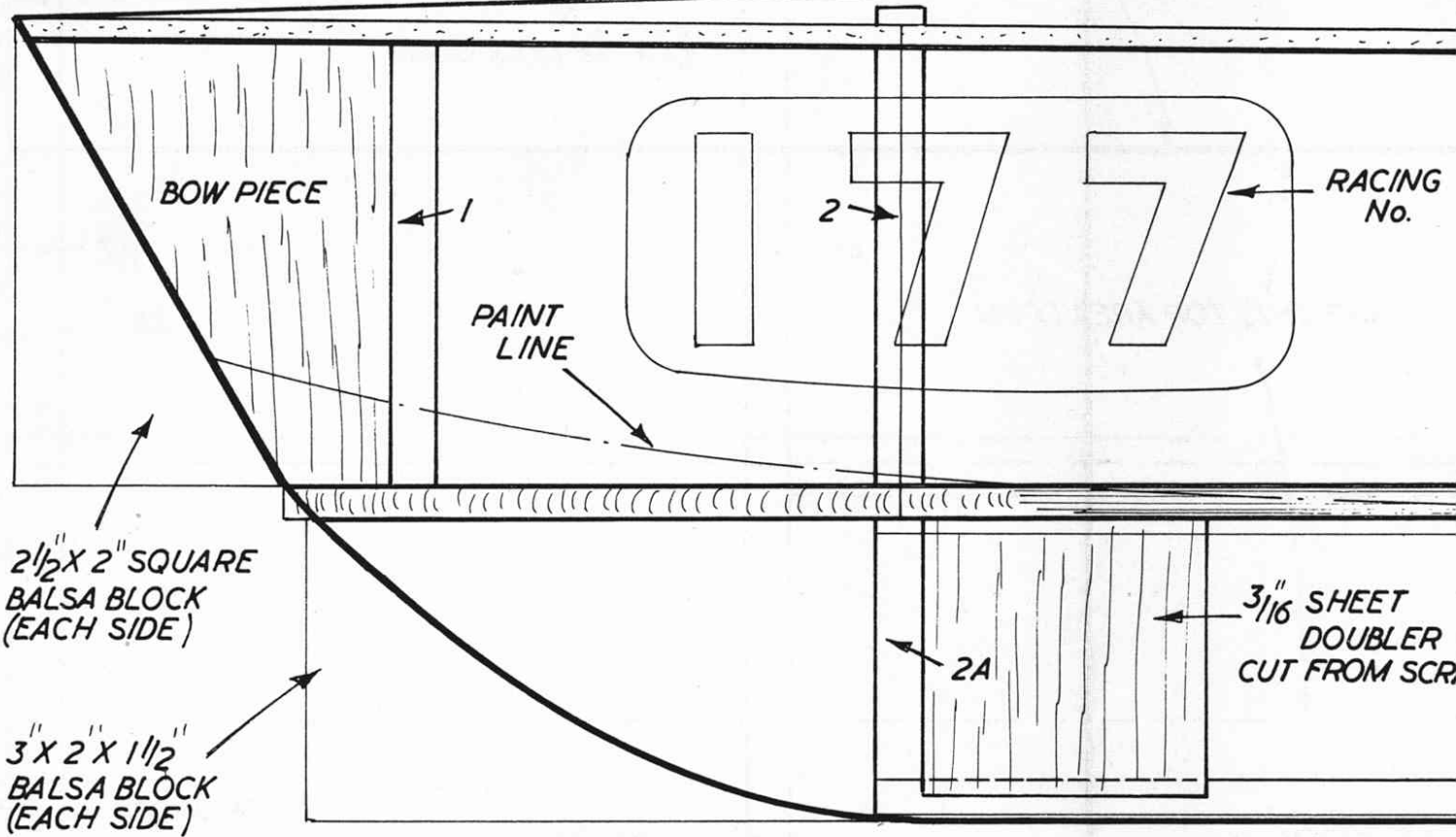
2A

7A

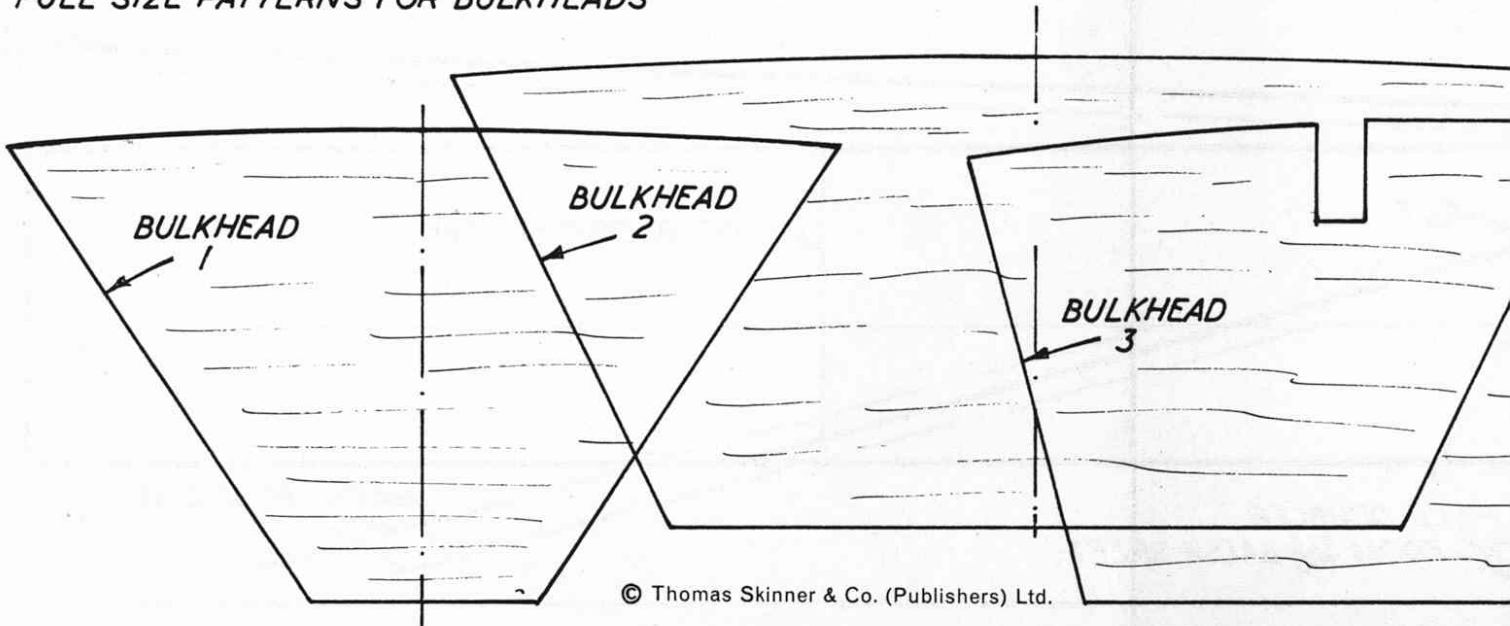
7B

THIS SECTION OF SIDE COVERED
WITH 3" WIDE SHEET WITH
GRAIN VERTICAL

MAIN SIDE PANELS
FINISH HERE

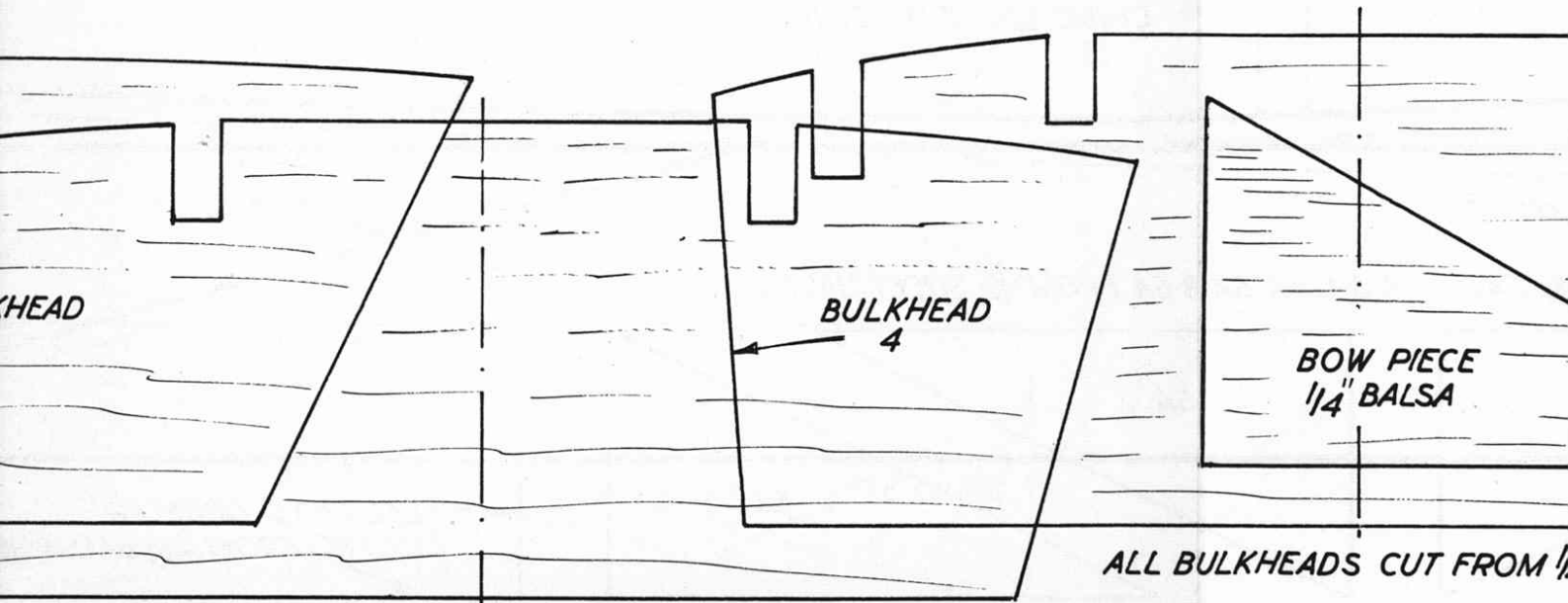
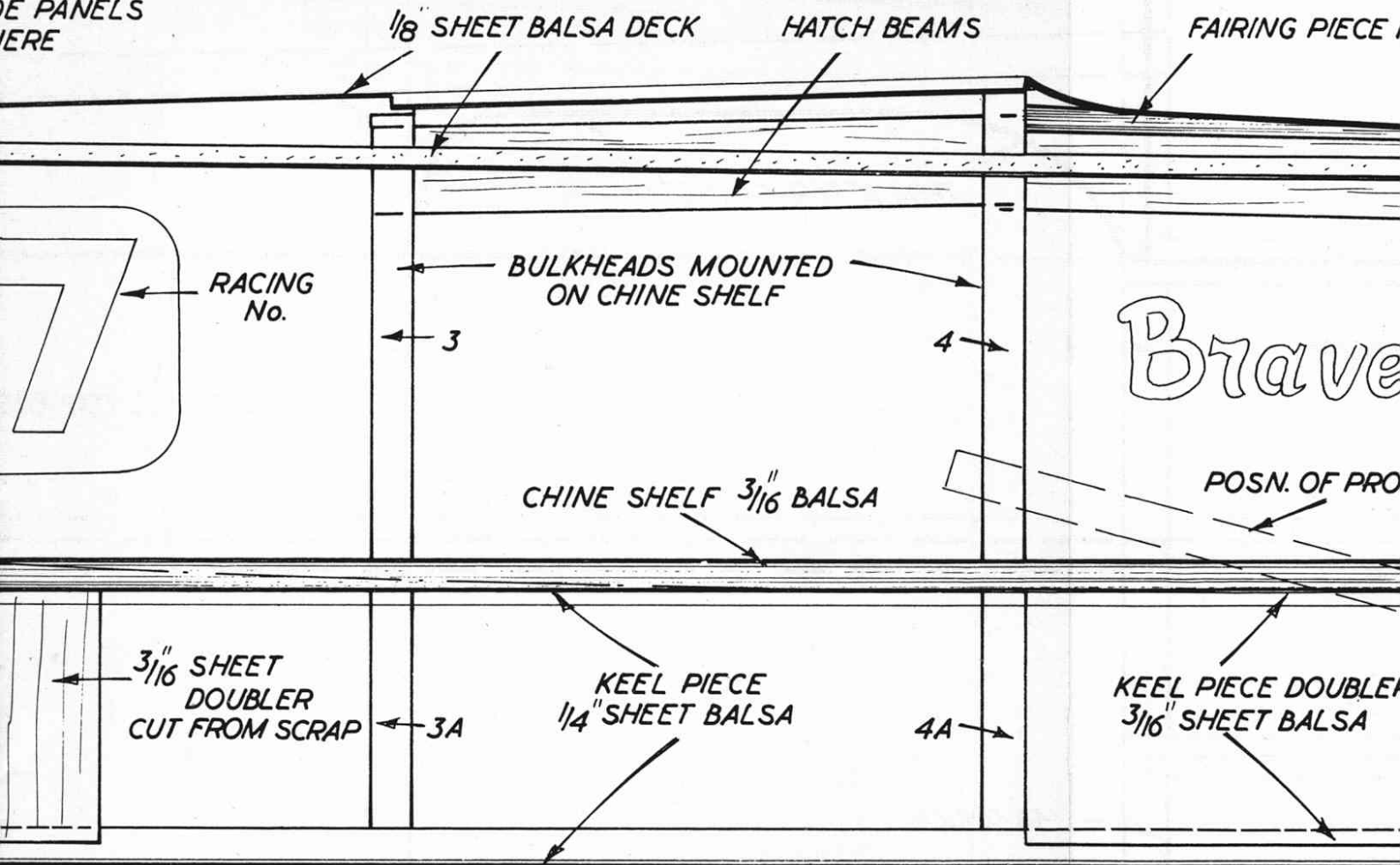


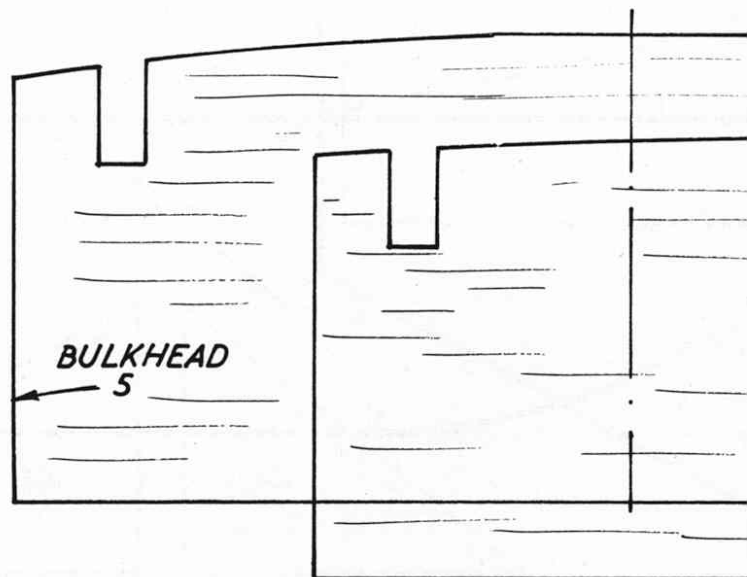
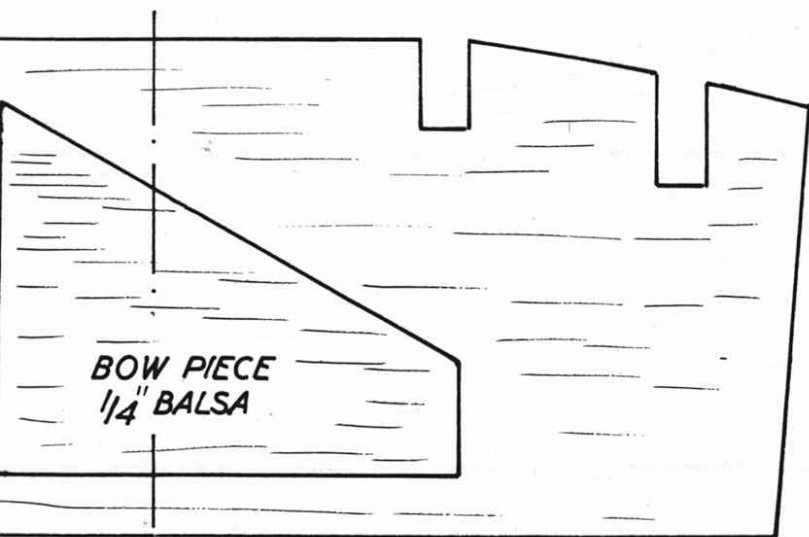
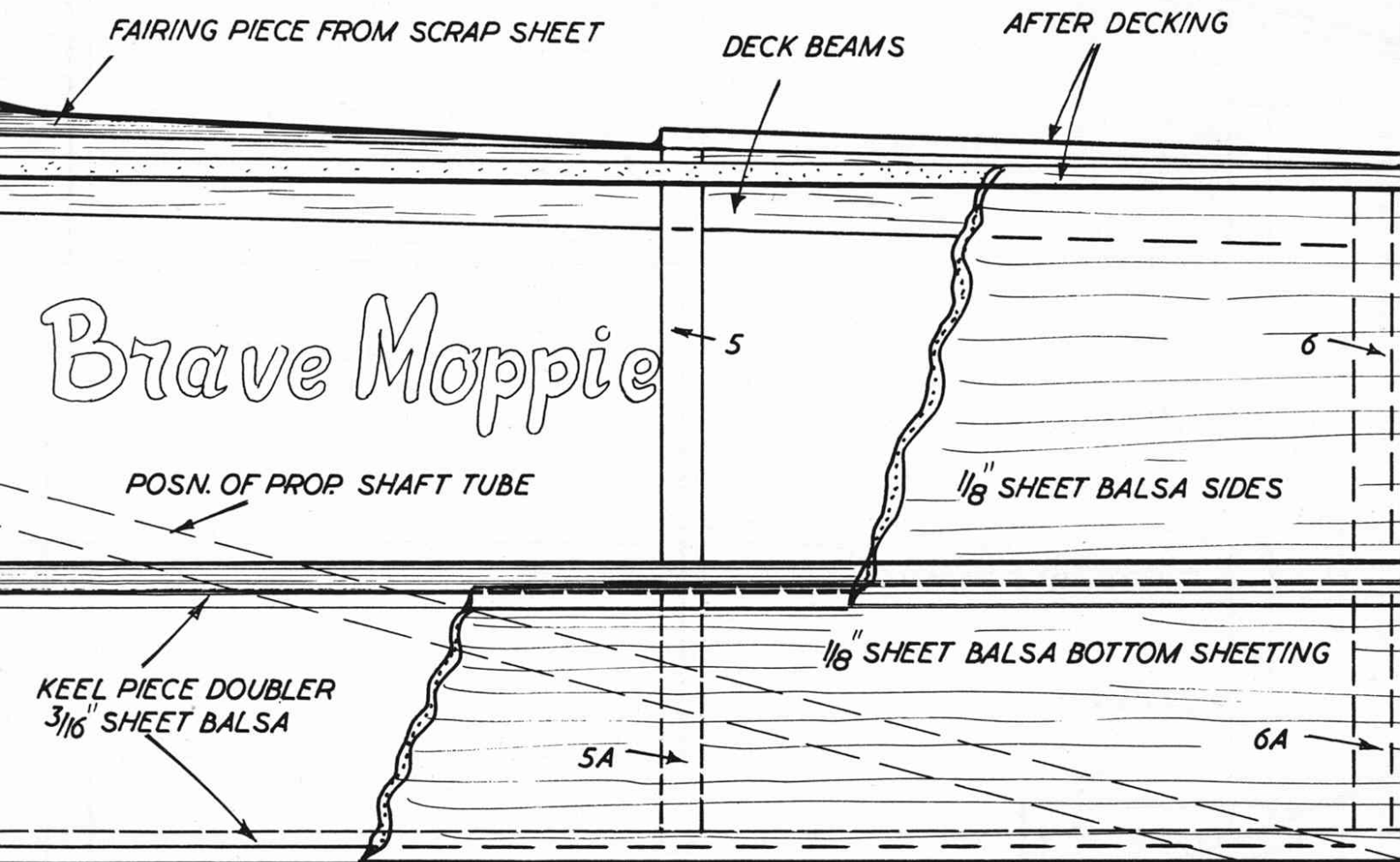
FULL SIZE PATTERNS FOR BULKHEADS



PROJECT '66 presented with MECCANO MAGAZINE

THE PANELS
HERE



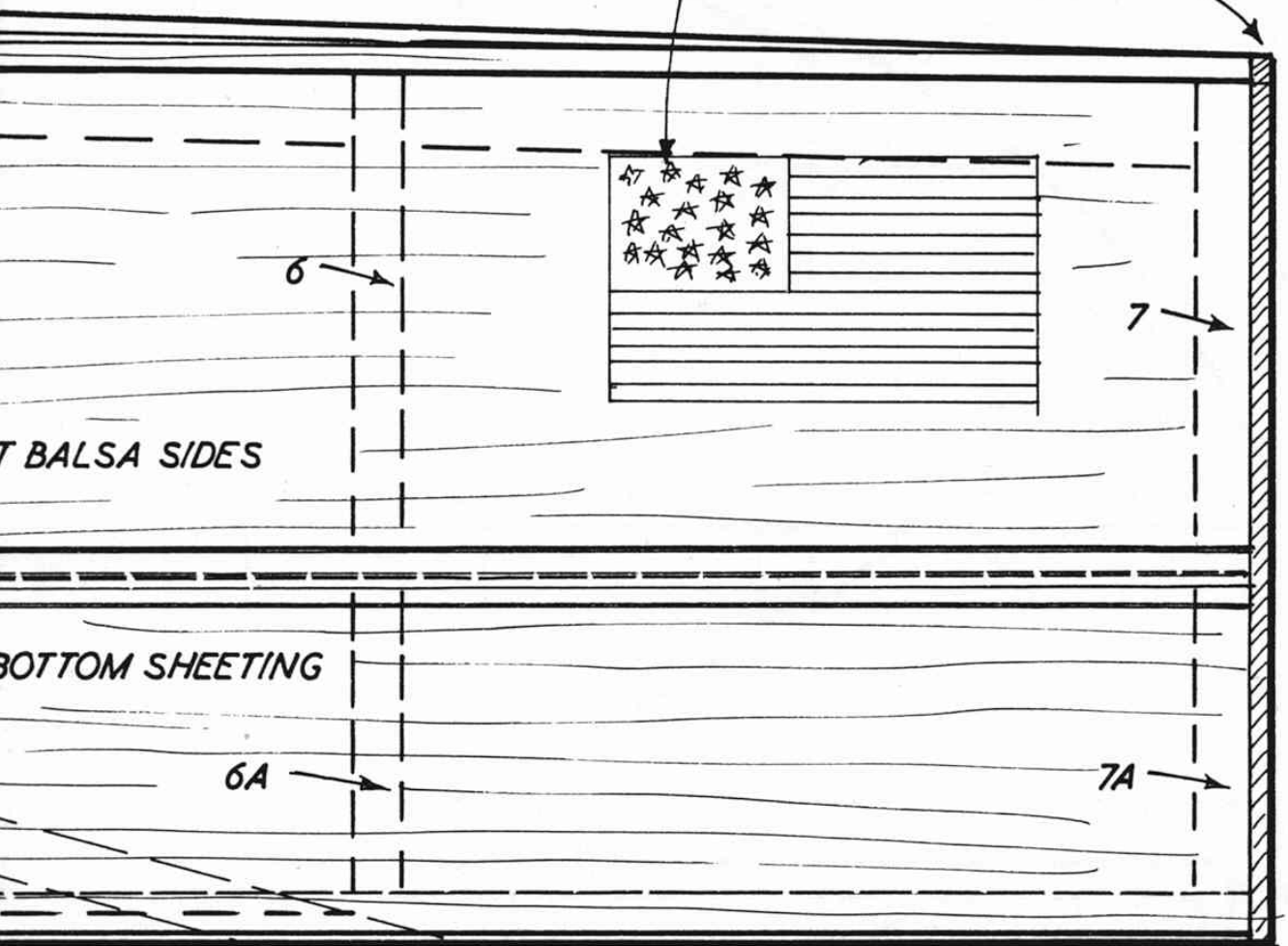


BULKHEADS CUT FROM 1/4" SHEET BALSAM

DECKING

NATIONAL FLAG - COUNTRY
OF ORIGIN OR ENTRY

1/16" PLY TRANSOM



BALSA SIDES

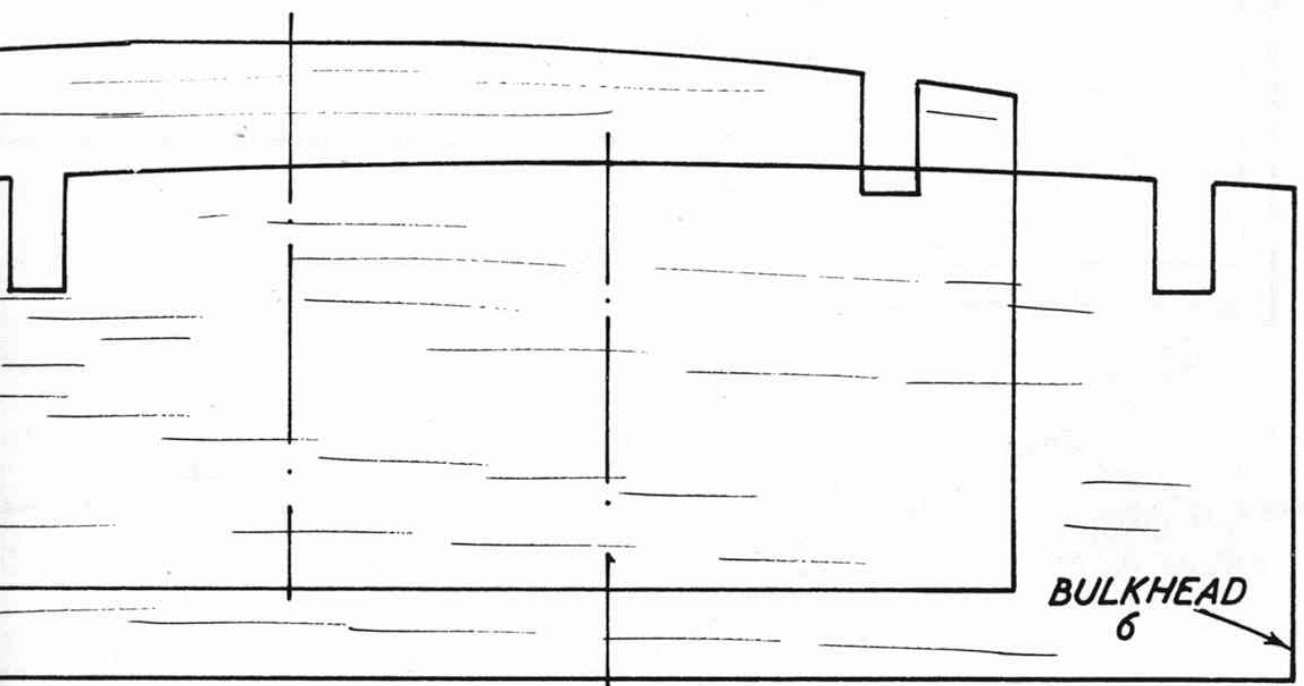
BOTTOM SHEETING

6

7

6A

7A



BULKHEAD
6

FOREDECK PANEL OUTLINE

BOW BLOCK

BOW PIECE

BULKHEADS

KEEL PIECE UNDER

2A UNDER

PATTERN FOR BULKHEAD 7
1/4" Balsa SHEET

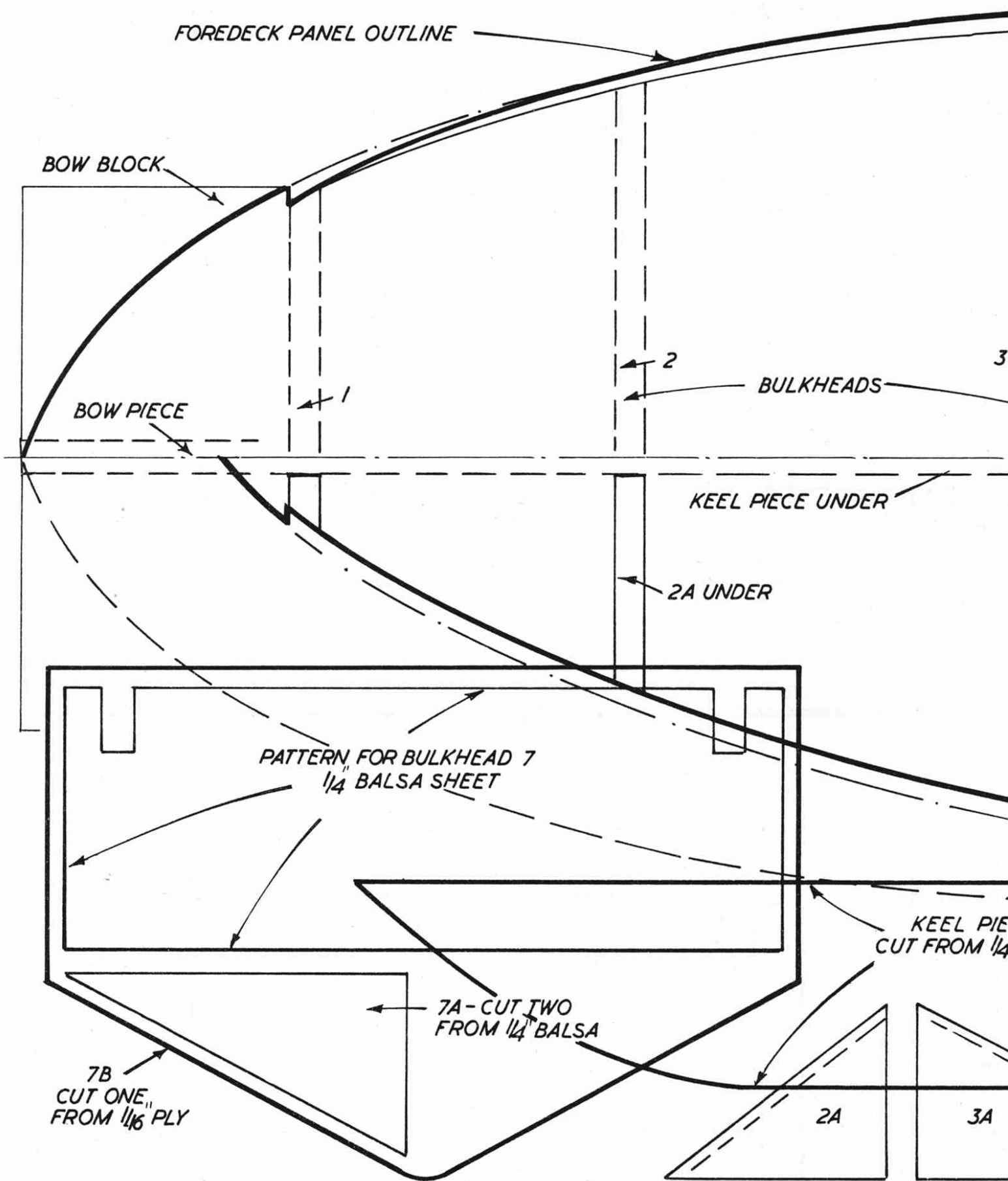
KEEL PIECE
CUT FROM 1/4"

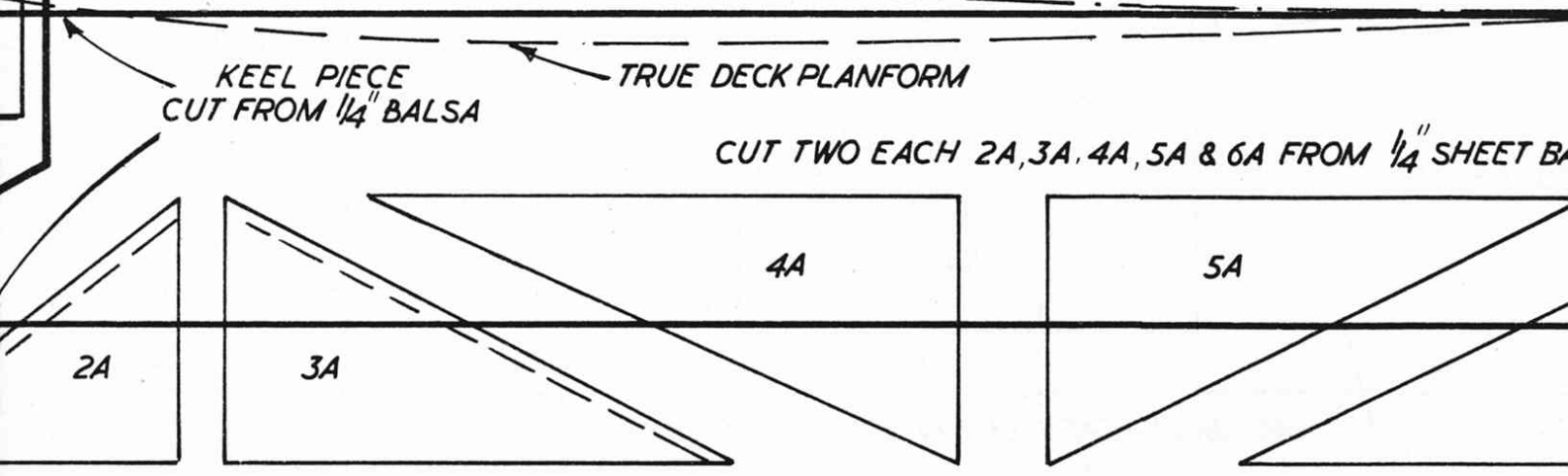
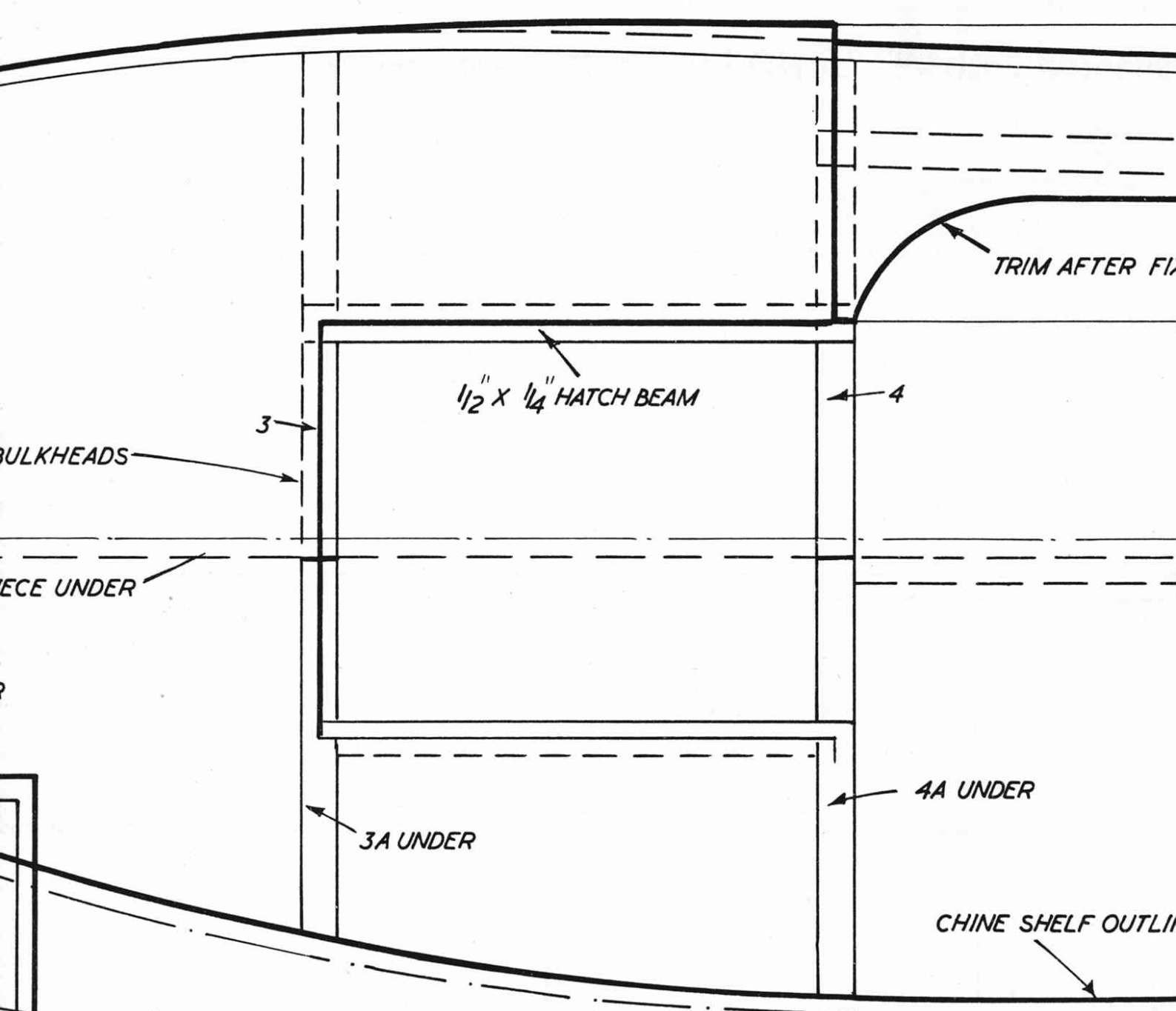
7A - CUT TWO
FROM 1/4" Balsa

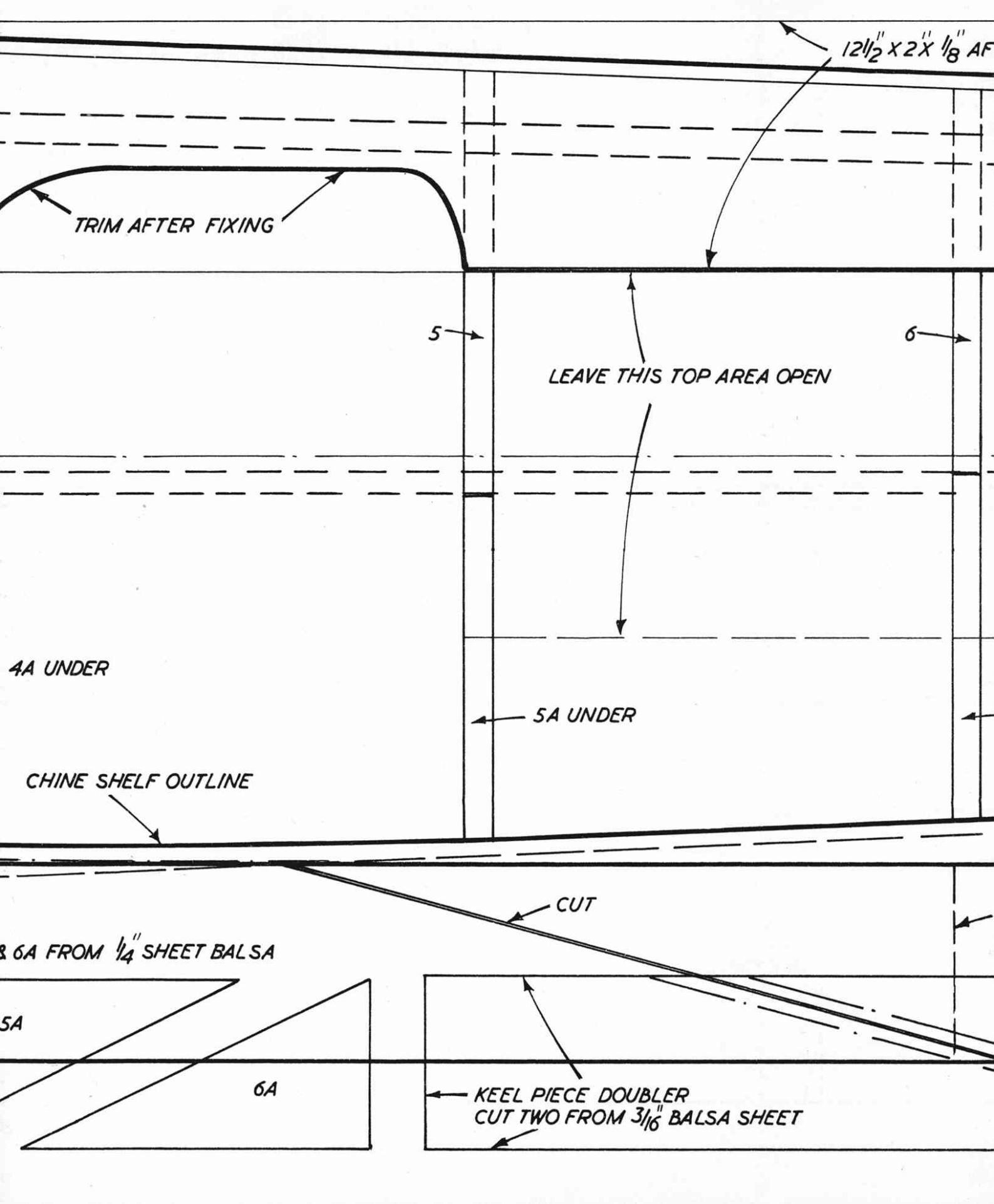
7B
CUT ONE 11"
FROM 1/16" PLY

2A

3A







12 1/2 x 2 x 1/8 AF

TRIM AFTER FIXING

LEAVE THIS TOP AREA OPEN

4A UNDER

5A UNDER

CHINE SHELF OUTLINE

CUT

6A FROM 1/4 SHEET BALSA

5A

6A

KEEL PIECE DOUBLER
CUT TWO FROM 3/16 BALSA SHEET

