



In these columns we reply to suggestions regarding improvements or additions to the Meccano and Hornby Train systems. We receive many hundreds of such suggestions every week, and consequently we are able to publish only ideas that show particular interest or ingenuity. Suggestions submitted for consideration in this section must be written on separate sheets of paper and the name and address of the sender must appear on each sheet used. Envelopes should be addressed to "Suggestions," Meccano Ltd., Binns Road, Liverpool.

Suggested New Meccano Parts

LONGER COMPRESSION SPRINGS.—We were interested in your suggestion regarding the introduction of longer Compression Springs, but we do not think that your proposed part would have any great advantage over the existing Spring, No. 120b. The occasions on which it could be used would probably be rare. (Reply to D. Weston, London, N.10).

GRUB-SCREWS IN PULLEYS, ETC.—We have not found many occasions where it has been necessary to substitute Grub-screws for the ordinary Set-screws supplied in the majority of the Pulley Wheels, etc. A better grip on the axles can be obtained with the Set-screws and on the few occasions when their heads are likely to foul the adjacent mechanism, it is a simple matter to substitute a Grub-screw. (Reply to H. Hatch, Three Rivers, Ontario).

CORNER ANGLE BRACKETS.—You will be interested to know that the new Corner Angle Bracket may be obtained in both right-hand and left-hand types, as indicated in the special announcement on this page. (Reply to S. Riley, Stowmarket).

CURVED ANGLE GIRDERS.—Curved Angle Girders supplied in short lengths would have a limited application we fear, but we have noted your suggestion for further consideration at a later date. (Reply to A. Godder, Canterbury).

BRAKE BANDS.—We think that a special band for external contracting brakes is scarcely necessary, as the functions of such a part are easily covered by cords or even Meccano Strips. See the various types of brakes described under Section VI of the Standard Mechanisms Manual. (Reply to A. Godder, Canterbury).

LUBRICATING CUPS.—We are very interested in your suggested oil cup for insertion in journal bearings formed from the bosses of Cranks or Meccano Wheels, etc. We agree that such an accessory would form a very attractive addition to many models, and we shall give the idea very careful consideration. Meanwhile, we may point out that where bearings of the type indicated above are used, the threaded bores of the Cranks, etc., form useful receptacles to receive the oil. These receptacles may be closed after the oil is applied by screwing a Handrail Support or other similar part into the threaded bore. (Reply to S. Holyoak, Coventry).

CORRUGATED PLATES.—We agree that the addition of corrugated steel plates to form roofs for cranes and similar models would prove very effective, but we fear that such accessories would not conform with the existing Meccano system. (Reply to A. Custance, Woodbridge).

NEW DOUBLE ANGLE STRIPS.—We will give further consideration to the question of introducing $1\frac{1}{2} \times \frac{1}{2}$ and 1×1 Double Angle Strips. (Reply to D. H. Williams, Ipswich).

TRIPLE-ANGLE STRIPS.—We note your suggestion regarding a part resembling a Double Angle Strip bent at right angles at its centre. We fail to see that such a part would be of much use, however. Two Double Angle Strips bolted together would fulfil the same functions admirably. (Reply to J. Stephens, Edinburgh).

LAMP HOLDER.—We were interested in your suggested new lamp holder, consisting of a screw holder, to take standard 4-volt bulbs, on a shaped metal base. We think, however, that in most cases the existing Meccano Lamp Holder (part No. 310) can be used in place of your proposed accessory. (Reply to J. Martin, Glasgow).

LONGER WINDING KEY.—We note your suggestion re a longer winding key for the Clockwork Motor, but we do not think that much advantage would accrue from its adoption. By the exercise of a little ingenuity the Motor can, in most cases, be put in an easily accessible position on the model. (Reply to P. Hollings, Northchurch, Herts.)

NEW REVERSED ANGLE BRACKETS.—Your proposed $1 \times \frac{1}{2} \times \frac{1}{2}$ Reversed Angle Bracket is interesting but hardly worth while including in the Meccano system as a new accessory. We think that you should find it a simple matter to contrive such a part from the existing Reversed Angle Bracket with the addition of a Flat Bracket bolted rigidly in the desired position. (Reply to A. Jones, London, N.W.1).

NEW DOUBLE ANGLE STRIP.—A $1\frac{1}{2} \times 1$ Double Angle Strip may easily be built up from existing parts. Two $1 \times \frac{1}{2}$ Angle Brackets bolted securely to a $1\frac{1}{2}$ Strip should serve the purpose admirably. (Reply to P. Graham, Avening, Glos.)

WIRE STAYS.—We are very interested in your suggestion that wire rods should be manufactured in different lengths for use as stays in roofs of buildings, such as stations, etc., and in bridges, aeroplanes, and similar models. We will bear the idea in mind. (Reply to N. S. Dunn, Kingston).

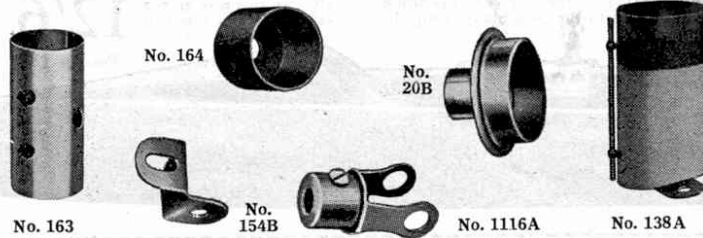
MECCANO TOOL.—We have noted your ideas concerning a Meccano tool of circular or square section, for use in model machine tools. We are keeping a careful record of all suggestions bearing on this subject, and later we shall be able to judge as to the advisability of introducing such a part into the Meccano system. (Reply to A. Staveley, Swinton).

MECCANO MOTOR IMPROVEMENT.—We have noted your suggestion regarding the extension of the Meccano Electric Motor armature spindle through both side plates of the Motor. We hope to adopt this idea in the near future. (Reply to E. Rawlings, Westmount, Canada).

NEW FLAT PLATES.—We are not in favour of your proposal regarding the supply of Flat Plates $1\frac{1}{2}$ in width and in various lengths, for these parts could easily be built up from existing accessories, such as Flat Girders. (Reply to D. Williams, Ipswich).

DISCS FOR MOTOR CAR WHEELS.—Your proposed disc, specially shaped to fit on to the 3rd Pulley Wheels when the latter are used as motor car wheels, is scarcely suitable as a Meccano accessory, since its uses would be very limited. (Reply to A. Custance, Woodbridge).

MORE MECCANO ACCESSORIES



The new parts shown above are the latest additions to the Meccano system. They make possible the construction of numerous new models and should improve the appearance and operation of many of the existing models. The particulars of the parts are as follows:—

No. 20b, Flanged Wheel, $\frac{3}{4}$ " diam., price 4d. These may be used as travelling wheels in all models that are required to run on rails, but they are particularly suited for use as bogie wheels in locomotives, etc. In addition they are designed to fit over the end of the Sleeve Piece (part No. 163) to form a complete cylinder unit. They also form excellent belt pulleys, especially if two are butted together on an Axle.

No. 116a, Fork Piece, small, price 3d. This part is designed for pivotal connections between Rods and Strips. Owing to its smaller design it lends itself to adaptations not possible with the existing Fork Piece (part No. 116). For example, it forms an excellent bearing for a $\frac{1}{4}$ " loose Pulley for use in connection with electric trolley arms, etc.; the Pulley should be journalled on a $\frac{1}{2}$ " Bolt passed through the Fork, and the boss of the latter should be secured to the end of a convenient Axle Rod.

No. 138a, Ship's Funnel, Cunard Type, price 6d. This part is of different design from the existing Ship's Funnel (part No. 138) and is designed primarily for use in model liners and other Meccano vessels. It is oval in shape, raked, and is fitted with a miniature steam pipe. It is enamelled red with black top, after the pattern adopted by the famous steamship line.

No. 154b, Corner Angle Bracket, left-hand, price 6d. per half dozen. This is a companion part to the Corner Angle Bracket illustrated in the October "M.M.," and like that part, is designed for use in cases where two $\frac{1}{2} \times \frac{1}{2}$ Angle Brackets bolted together would prove either too cumbersome or insufficiently rigid. The bracket previously announced will be known as the "right-hand" type and will bear the number 154a instead of 154.

No. 163, Sleeve Piece, price 6d. per pair. This part measures $1\frac{1}{2}$ " in length by $\frac{1}{2}$ " in diameter. Fitted with a $\frac{3}{4}$ " Flanged Wheel at each end, it forms an excellent cylinder. Two or three Sleeve Pieces may be used to build up a chimney or length of hollow shafting, etc.

No. 164, Chimney Adaptor, price 2d. This is in the form of a small cylinder closed at one end except for a hole of standard size, with the aid of which the adaptor may be bolted to any Meccano part. This accessory forms a suitable chimney for model locomotives, etc.

LARGE FLANGED PLATES.—The uses of your suggested large Flanged Plate with flanges formed on the ends only are covered already by the Plates already included in the Meccano system. We do not think that we should be justified in bringing out such a part as you suggest. (Reply to D. Weston, London, N.10).

HOLES IN LARGE BEVEL GEARS.—You will be interested to know that since our announcement in the October "M.M.," it has been decided to include eight holes in the face of the $1\frac{1}{2}$ " Bevel Gear (part No. 30c). This improvement will increase the adaptability of the part to a considerable extent, as you point out. (Reply to P. Graham, Avening, Glos.)

RATCHET SPANNER.—We were very interested in your proposed ratchet spanner. It is certainly a very good idea but we fear that it would be rather difficult and expensive to manufacture. We find that the present type of spanner is suitable for all the requirements likely to arise in Meccano model-building. (Reply to D. Davies, Cwngwrack, Glam.)

I SAY,
FATHER!



HERE'S A
REALLY
FINE
PLAY GUN

—a gun which looks and works like a real sporting gun. The FOX PLAY GUN has double steel barrels

which "break" for loading at the breech just like a man's gun. You load it by putting two spring cartridges in the breech and pressing a small wooden ball into each cartridge. There are two triggers, of course, one for each barrel, and the balls travel with enough force to give you accurate target practice indoors or out-of-doors, but they can't hurt anybody or anything. Just tell Daddy that!

Looks like a real Gun, Works like a real Gun, but is Perfectly HARMLESS.

Show this advertisement to Father and tell him what hours of fine fun you could have (he also) with this splendid Play Gun. A strong bell target comes with each Gun together with two cartridges and a good supply of balls.

FOX PLAY GUN

DOUBLE BARREL BREECH LOADING

From all high-class Toy Dealers and Stores **Price 17'6**

—15 shots straight off!

This new Savage Repeating Rifle is just like a real one, too, and is perfectly safe even indoors. There's no explosive. The $\frac{3}{8}$ -inch light-weight fibre balls are fired by a coil spring which is compressed by a pump action lever. The magazine holds 15 balls and they give accurate target practice up to a 20-foot range. With a rifle like this you could have great fun getting up a regular Bisley among the family!

Sold by all high class Stores and Toy Dealers.

Price
25'-



The New
SAVAGE
REPEATING PLAY RIFLE

If any difficulty in obtaining either of these wonderful guns, write:

BEDINGTON, LIDDIATT & CO. LTD.,
Dept. B, 4/7, Chiswell Street, London, E.C. 1.

MECCANO Ships' Funnels

The realistic Ship's Funnel, Cunard type, introduced recently, has proved so extremely popular that we have decided to introduce 24 additional funnels representing those of nearly all the principal Shipping Companies. Four of the new funnels are described below and in subsequent issues of the "M.M." we propose to deal similarly with the others in the range.

The Meccano Ships' Funnels are raked and are provided with two perforated lugs by means of which they may be bolted to any Meccano Strip or Plate. They are all beautifully enamelled and finished.

Price 9d. each



138g
White Star Line.
Buff funnel. Broad black band at top.

Also representative of the following:

Anglo-Saxon Petroleum Co. Ltd.
Australind Steam Shipping Co. Ltd.
Bank Line
Barrie, Charles & Son.
Booker Line.
British Mexican Petroleum Co. Ltd.
Dunn, Chas. G. & Co. Ltd.
Elders & Fyffes Ltd.
Gillespie & Nicol.
Hogarth, H. & Son.
Hull & Netherlands S.S. Co. Ltd.
Jacobs, John I. & Co. Ltd.
King Line Ltd.
Shaw Savill & Albion Co. Ltd.



No. 138b
Isle of Man S.P. Co. Ltd.
Red funnel, broad black band at top. Two thin black bands round middle.

Also representative of the following:

Alkinson, E. P. & Sons.
Belfast S.S. Co. Ltd.
Chambers, J. & Co.
Commonwealth & Dominion Lines Ltd.
Glen & Co.
Houston, R. P. & Co.
Lang & Fulton.
London S.S. & Trading Corporation Ltd.



No. 138w
Moss Line
Black funnel with broad white band.

Also representative of the following:

American Line.
Aster Shipping Co. Ltd.
Bristol Steam Nav. Co. Ltd.
Brown, Atkinson & Co. Ltd.
Cleaves, W. V., Anthracite Collieries Ltd.
Currie, James & Co.
Donaldson Line.
Gardner, J. & A. & Co.
Japp Hatch & Co. Ltd.
Nisbet, Geo. & Co.
Sloan, Wm. & Co.
Stephenson Clark & Co. Ltd.
Yorkshire Coal & S.S. Co. Ltd.



No. 138h
G.W.R. Steamers—Fishguard.
Red funnel with broad black band at top.

Also representative of the following:

Anglo American Oil Co. Ltd.
Atlantic Transport Co. Ltd.
Bristol Channel Steamers Ltd.
Bruce, J. & Co.
Cairns Noble & Co. Ltd.
Cockerline, W. H. & Co.
Denholm, J. & J. Ltd.
Dundee Perth & London Steamship Co. Ltd.
Ellermans' Wilson Line Ltd.
Glen Line Ltd.
Gow, Harrison & Co.
Guinness, A. Sons & Co. Ltd.
Hall Bros. S.S. Co. Ltd.
Holt, John & Co. (L'pool.) Ltd.
MacBrayne, D. Ltd.
Mackie, Richard & Co.
Power S.S. Co. Ltd.
Raeburn & Verel Ltd.
Royden, Thomas & Sons.
Watson Bros. Shipping Co. Ltd.

Obtainable from any Meccano dealer, price 9d., or direct from Meccano Ltd., Liverpool, price 10 $\frac{1}{2}$ d. post free.

MECCANO LTD., Old Swan, LIVERPOOL

JUST OUT—**JIG-SAW PUZZLES***of the famous***"GOLDEN ARROW LIMITED"***de luxe Pullman Express***LONDON—PARIS***drawn by "Nelson" Engine***"Sir Richard Grenville"**

(No. 853.)

Price 5/- each.

These puzzles comprise 160 pieces and are obtainable at S.R. Enquiry Offices and at Messrs. W. H. Smith's Bookstalls and Shops.

Have you seen the Revised Edition of
**"LOCOMOTIVES of the
SOUTHERN" Booklet?**

Price 1/-, at S.R. Bookstalls and from
Locomotive Publishing Company, 3, Amen Corner, E.C. 4.

Coloured Plates of the "Golden Arrow Limited,"
1/- post free.

Postcards of "Lord Nelson" and "Atlantic Coast
Express," 1d. each.

Postcards of Express Engines, Goods Engines and
Express Trains, 6d. per set.

All obtainable from Advertising Department, Southern Railway,
Waterloo Station, S.E.1.



**All Meccano
Outfits and Hornby
Trains are Stocked
by Kendal Milne
of Manchester**

*Order by post if you cannot
call. We pay carriage and
guarantee satisfaction.*

Kendal Milne & Co.
MANCHESTER

MECCANO

Ships' Funnels

In the November "M.M." we announced the introduction of 24 ships' funnels representing those of nearly all the principal Shipping Companies. Four of the new funnels were illustrated and described in page 888 of that issue.

Details of a further group, composed of seven funnels, are given below. In some cases the funnels represent more than one shipping line and we have indicated the names of these.

The Meccano Ships' Funnels are raked and are provided with two perforated lugs by means of which they may be bolted to any Meccano Strip or Plate. They are all beautifully enamelled and finished.

Price 9d. each**No. 138e**

**Pacific & Orient
Steam
Navigation Co. Ltd.**

Also representative
of the following:

Anchor Line Ltd.
Anglo Celtic
Shipping Co. Ltd.
Ashdown, C. G. & Co.
Bolton, F. & Co.
Booth, S. S. Co. Ltd.
British & African Steam Nav. Co. Ltd.
British Dominions S.S. Co. Ltd.
Burdick & Cook.
Burrell & Son.
Capper, Alexander & Co.
Carron Company.
China Navigation Co. Ltd.
Clark & Service.
Claymore Shipping Co. Ltd.
Clyde Shipping Co. Ltd.
Cory's Trading Ltd.
Denaby Shipping Co.
Donald & Taylor.
Duncan, J. T. & Co.
Dundalk & Newry, S.P. Co. Ltd.
Dunlop, Thos. & Sons.
Eastern & Australian S.S. Co.



**Black
funnel**

Essex Line Ltd.
General Steam Nav. Co. Ltd.
Gibson-Rankine Line.
Glover Bros.
Henderson, P. & Co.
Hudson, R. N. & Son Ltd.
Hutchison, J. & P. Ltd.
Joplin & Hull.
Kyle Transport Co. Ltd.
Miller, Wm. S. & Co.
Mogul Line.
Morgan & Cadogan Ltd.
Murphy, Michael Ltd.
North of Scotland & Orkney &
Shetland S.N. Co. Ltd.
Pickard, A. W. & Co.
Rhondda Merthyr Shipping Co. Ltd.
Robertson, Wm.
Shamrock Shipping Co. Ltd.
Southern Railway Co. (South
Eastern & Chatham Section).
Stott, W. H. & Co. Ltd.
Summerfield Steamship Co. Ltd.
Watts, Watts & Co.
Welsford, J. H. & Co. Ltd.
Woods, Tyler & Brown.

**No. 138z**

**British & Irish
S.P. Co. Ltd.
Green Funnel.
Broad black band
at top.**

**No. 138r**

**Brussels S.S. Co.
Yellow funnel.
Black band at top
with red and green
bands round middle.**

**No. 138u**

**Yeoward Line.
Black funnel. Yel-
low band above
middle flanked by
two red bands.**

**No. 138k**

**Lampport & Holt
Line.
Blue funnel. Broad
black band at top
with broad white
band immediately
beneath.**

Also representative of
Jas. Cormack & Co.

Meccano Funnels are obtainable from any Meccano dealer, price 9d., or direct
from Meccano Ltd., Liverpool, price 10½d. post free.

**No. 138q**

**Clan Line.
Black funnel with
two red bands above
middle.**

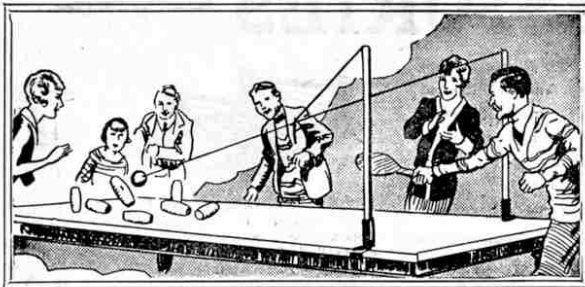
Also representative of
W. R. Davies Steamers.

**No. 138f**

**Alfred Holt & Co.
Blue funnel. Broad
black band at top.**

Also representative of
G. T. Gillie & Co.

MECCANO LTD., Old Swan, LIVERPOOL

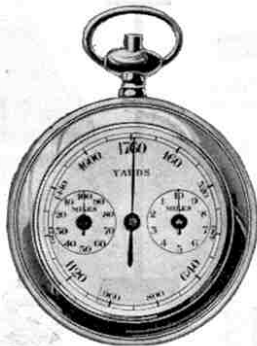


"KUM-BAK"
SKITTLE TENNIS

A fast and exciting game of skill for any number of players. Provides excellent practice for table and lawn tennis—ideal for parties. Price **12/6**

PEDOMETERS

For registering distance walked. Carried in the waistcoat pocket.
No. 2.—Registers up to 10, also up to 100 miles, 13/-.
No. 3.—Registers yards, 1, 10 and 100 miles, 14/-.
No. 4.—Registers 1 to 1,000 miles, 16/-.



Hamleys
ESTD 1760
HAMLEY BROS LTD.

Mail Order Department (M):

200/2, REGENT STREET, LONDON, W. 1
86/7, High Holborn, W.C.1. 23, George Street, Croydon.
512/4, Oxford Street, W.1. 62/4, Seaside Road, Eastbourne.
Oxford Circus Tube Station (Booking Hall).

HERE'S A FINE GAME FOR THE FAMILY



ESCALADO. A most popular and fascinating Race Game. The horses move independently when the cloth is vibrated by turning a handle. Obstacles check the horses at various intervals.

No. 1.	5 Horses	7/6	All
No. 2.	8 Horses and longer Cloth	10/6	Carr.
No. 3.	12 Horses	21/-	Paid.

We specialise in Meccano and Hornby Trains and carry a full stock of all accessories.

WIGWAMS

create fine fun indoors or out of doors.
4 ft. 5 ft. 6 ft. 7 ft. high
7/6 17/6 21/- 27/6
Made from Strong Brown Canvas, gaily decorated.

INDIAN SUITS.

No. 1	No. 2	No. 3	No. 4
7/6	10/6	15/6	21/-

Each made in four different sizes.
No. 4 includes Spear and Tomahawk.

Send for 28 page Catalogue, Post Free.

W. HARRIS BRADLEY

53 & 54, VICTORIA ST., WOLVERHAMPTON

MECCANO
Ships' Funnels

The new range of Meccano Ships' Funnels has become extremely popular with Meccano model-builders. There are 25 funnels in the series representing those of nearly all the principal Shipping Companies. Eleven of the funnels have already been illustrated and described, four in the November 1929 issue and seven in the January 1930 issue of the "M.M."

Details of a further group, composed of seven funnels, are given below. In some cases they represent more than one shipping line and the names of these are indicated.

The Meccano Ships' Funnels are raked and are provided with two perforated lugs by means of which they may be bolted to any Meccano Strip or Plate. They are all beautifully enamelled and finished.

Price 9d. each



138T
Canadian Pacific
S.S. Co.

Buff
funnel

Also representative of the following:—

- | | |
|-----------------------------|--|
| Richard W. Jones & Co. | Orient Line (Anderson, Green & Co. Ltd.). |
| John Glynn & Son, Ltd. | Pacific S.N. Co. |
| J. Temperley & Co. | Garth Shipping Co. Ltd. (H. Clapham & Co. Ltd.). |
| Royal Mail S.P. Co. | Hudson Bay Co. |
| Hudson Bay Co. | John Hall, Junr. & Co. Ltd. |
| John Hall, Junr. & Co. Ltd. | Joseph Constant. |
| Joseph Constant. | Lyle Shipping Co. |
| Lyle Shipping Co. | MacAndrews' Line. |
| MacAndrews' Line. | Asiatic S.N. Co. Ltd. |
| | Eastern Telegraph Co. Ltd. |
| | Easton, Greig & Co. |
| | New Zealand Shipping Co. |



No. 138Y
Furness Line.
Black funnel. Broad red band round middle with narrow black and red bands immediately above.



No. 138A
Cunard S.S. Co.
Red funnel. Broad black band round top with three thin black bands round middle.



No. 138V
A. Coker & Co. Ltd.
Blue funnel. Broad black band at top with narrower white band below.



No. 138C
T. & J. Harrison.
Black funnel. Red band flanked by two white bands.



No. 138L
Manchester Liners Ltd.
Orange funnel. Broad black band at top and narrower black band round middle.



No. 138S
Union Castle Mail S.S. Co. Ltd.
Red funnel. Broad black band round top with thin black band round middle.

Also representative of the following:—
Alf. Rowland & Co.
John Harrison Ltd.

Also representative of the following:—
Whimster & Co.
Joseph Constantine S.S. Ltd.

Also representative of the following:—
David MacIver & Co. Ltd.
R. Gilchrist & Co.

Obtainable from any Meccano dealer, price 9d., or direct from Meccano Ltd., Liverpool, price 10½d. post free.

MECCANO LTD., Old Swan, LIVERPOOL

10 minutes on a TERRY STEELSTRAND

The balance of health can be kept if the muscles have a daily cleansing and toning up.

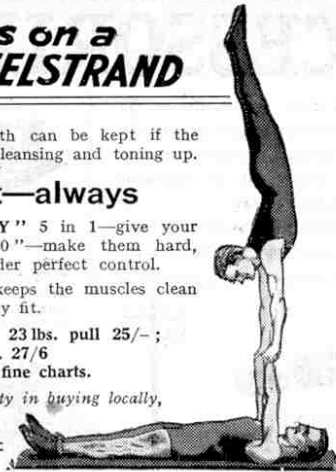
Keep fit—always

—train on a "TERRY" 5 in 1—give your muscles the daily "10"—make them hard, tireless, quick and under perfect control.

The daily tone up keeps the muscles clean and your body perfectly fit.

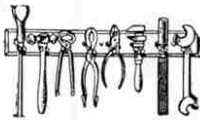
19 lbs. pull 22/6 ; 23 lbs. pull 25/- ;
36 lbs. 27/6
with three fine charts.

If you have difficulty in buying locally, write us. List Free.



TERRY'S NEWSPAPER CLIP

"Dailies" bound like a book in five seconds. Keeps newspapers compact, prevents sheets slipping out. 25 years' reading pleasure for 9d. Also good for binding music. If difficult to get from local trader, send 1/6 for two sample pairs.



No. 305. The "Avecta" workshop or garage Tool Rack. High-grade steel clips. Keeps tools in good condition and bench clear.

4 6 8 10 12 clips
2/3 3/6 4/6 5/6 6/6 each.



Smile at miles on a "TERRY" Saddle—it will smooth out the miles, make them easier and increase the happy radius of riding. Motor-cycle models, 42/-, 36/6, 30/-. Cycle models for Lady or Gent., 18/6. List Free.

HERBERT TERRY & SONS LTD., REDDITCH, ENG.
Established 1855



SELO

is the new fast

ROLL FILM

Use it in your camera now! It combines speed with the latitude that corrects all but the grossest errors in exposure.

The joint Product of
Imperial Illingworth Gem
Ilford Rajar Wellington



'Selo' is sold at the new reduced price

No. 20. Eight Exposures
2 1/4 x 3 1/4 - 1/-

Say 'Selo' (SEA-LO) to your dealer and ensure the best.

MECCANO

Ships' Funnels

The new range of Meccano Ships' Funnels has become extremely popular with Meccano model-builders. There are 26 funnels in the series representing those of nearly all the principal Shipping Companies. Eighteen of the funnels have already been illustrated and described in the "M.M.," four in the November 1929 issue and seven in each of the January and February 1930 issues.

Details of the final group, composed of eight funnels, are given below. In some cases they represent more than one shipping line and the names of these are indicated.

The Meccano Ships' Funnels are raked and are provided with two perforated lugs by means of which they may be bolted to any Meccano Strip or Plate. They are all beautifully enamelled and finished.

Price 9d. each



No. 138I

Holland America Line. Buff funnel. White band round middle flanked by two green bands.



No. 138N

Southern Railway, London, Brighton & South Coast Section. White funnel. Broad black band round top.

Also representative of the following:—

Burmah Oil Co. Ltd. London & North Eastern Railway (Gt. Central Section, Grimsby).

James Westoll. James Mitchell & Sons. Dover Navigation Co. Ltd.

Williamson, Buchanan Steamers Ltd., and Turbine Steamers Ltd. City of Cork S.P. Co. Ltd.

British & Continental S.S. Co. Ltd.



No. 138P

Nelson Line. Red funnel. Broad black band at top with three narrower bands (black band and two white bands); immediately below.



No. 138X

Leyland Line. Pink funnel. Broad black band round top.

Also representative of the following:—

Bibby Bros & Co. Haldin S.S. Co. J. Hay & Sons Ltd.



No. 138J

Ellerman Line. Buff funnel. Broad black band at top with narrower white band immediately below. The latter is divided from the main buff portion by a thin black band.

Also representative of the following:—

Ellerman City Line. Ellerman Hall Line. Ellerman-Papayanni Line. Ellerman Lines Ltd. (Westcott & Laurance Line Ltd.)



No. 138M

London & North Eastern Railway Co.

Red funnel. Broad black band round top and narrow white band immediately below.

Also representative of the following:—

Sutcliffe & Co. Ltd. Chr. Salvesson & Co., Leith.

Wilson's, & North Eastern Railway Shipping Co. Ltd.



No. 138O

Aberdeen, Newcastle & Hull Steam Co. Black funnel with two narrow white bands.

Also representative of the following:—

British India S.N. Co. Ltd. West Australian S.N. Co. Ltd.

Evan Thomas Radcliffe & Co. Sharp S.S. Co. Ltd.



No. 138D

United States Lines. Red funnel. Broad black band at top with white band of same width immediately below.

Obtainable from any Meccano dealer, price 9d., or direct from Meccano Ltd., Liverpool, price 10d. post free.

MECCANO LTD., Old Swan, LIVERPOOL