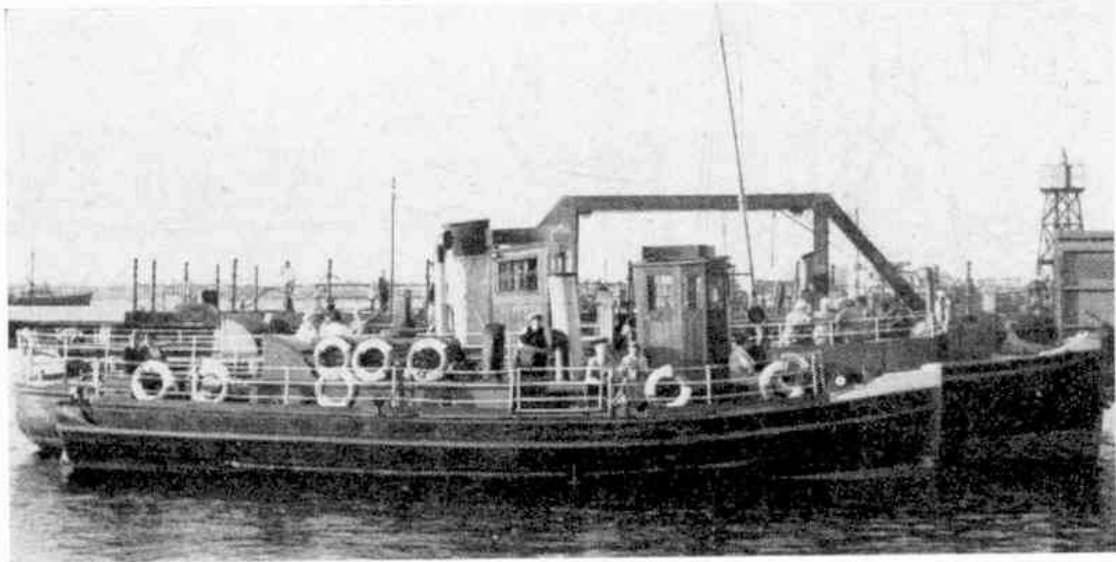


From Our Readers

This page is reserved for articles from our readers. Contributions not exceeding 500 words in length are invited on any subject of which the writer has special knowledge or experience. These should be written neatly on one side of the paper only, and should be accompanied if possible by original photographs for use as illustrations. Articles published will be paid for. Statements in articles submitted are accepted as being sent in good faith, but the Editor takes no responsibility for their accuracy.



British Railways to Close a Ferry

British Railways are to close two ferries that have been running for many years. They are the Harwich-Shotley and Harwich-Felixstowe ferries, which link North East Essex and South East Suffolk.

The first of these crosses the River Stour, which takes about eight to ten minutes. The boat usually on this trip is the *Epping*. The journey to Shotley by road is by way of Manningtree, the nearest point at which the river can be crossed by bridge, and is about 20 miles long.

The Felixstowe trip takes about fifteen minutes, crossing the confluence of the rivers Stour and Orwell. The distance by road between these two towns is almost 40 miles. The boat usually doing this trip is the *Brightlingsea*, larger than the *Epping*, for often the crossing is quite rough.

The accompanying photograph shows the *Epping*, with the *Brightlingsea* behind her, tied up at the "Ha'peny Pier" at Harwich.

H. L. HALL (Dovercourt)

The Bridge of the Fort

The fine bridge illustrated on this page is in Malaya, and is named after the fort of the marauding Bugis pirates who once terrorised the inhabitants of Klang. It is called *Jambatan Kota* or the "Bridge of the Fort", and is Malaya's first double-deck bridge. The Sultan of Selangor opened it on 24th June last.

The structure has been described as one of the largest engineering projects undertaken in Malaya. It is double-decked, the first of its kind in South East Asia, and promises to be a tourist attraction for foreign visitors. It is a new

landmark in Klang, becoming visible as you approach the town from Kuala Lumpur.

The bridge is a steel and concrete structure, 1,500 ft. long, with its top deck 40 ft. above the water. Of this, 200 yards cross the river in three spans. The longest, in the centre, is 282 ft. long and is the longest clear span of its kind in the Federation. It was completed two months ahead of schedule and is quite an achievement.

The new bridge will speed the passage of merchandise by road between Port Swettenham, on the west coast of Malaya, and Kuala Lumpur. It will also be of great value to local traffic. Both decks allow two-way traffic. The lower one, which is used by cyclists and pedestrians, is on street level.

T. T. J. CHUAN (Selangor, Malaya)

